

# The Big Blood Picture 2016

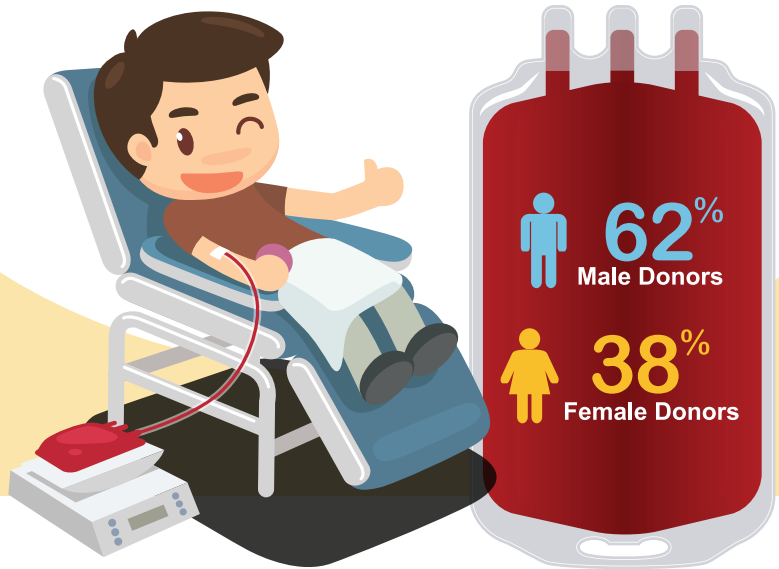
As the National Blood Service, HSA aims to provide a safe and adequate blood supply to all patients who need blood transfusion.

## Blood Donors

**73,587 = 1.87%**

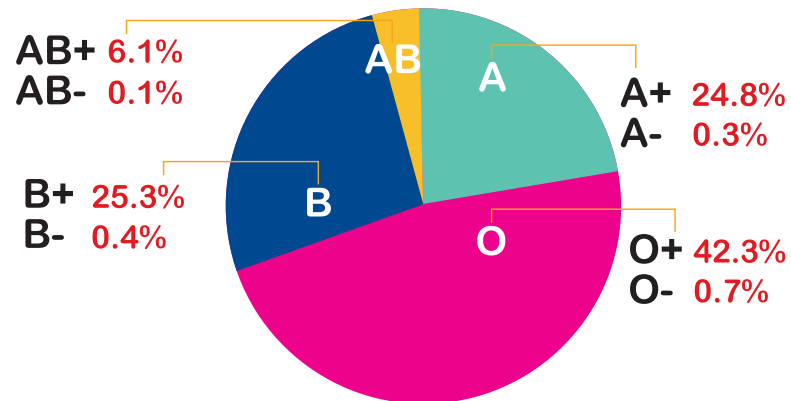
of Singapore's residential population

1st Time Donors **29%** Regular Donors **38%** Youth Donors **27%**



Singapore Red Cross (SRC) is the National Blood Donor Recruiter. SRC recruits, retains and educates blood donors to meet national blood needs.

## Donors by Blood Type

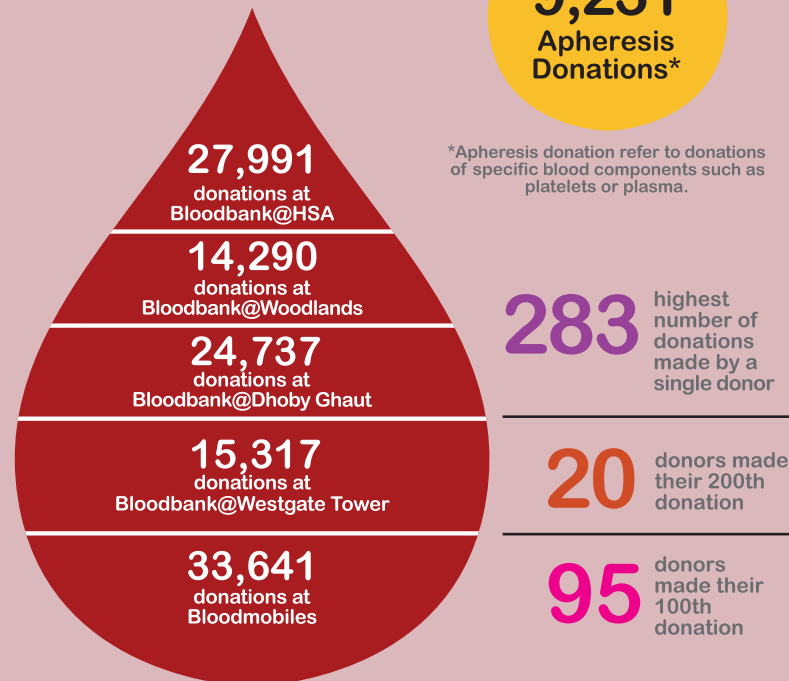


Unless otherwise stated, all figures are for the period 1 January to 31 December 2016.

## Blood Collection

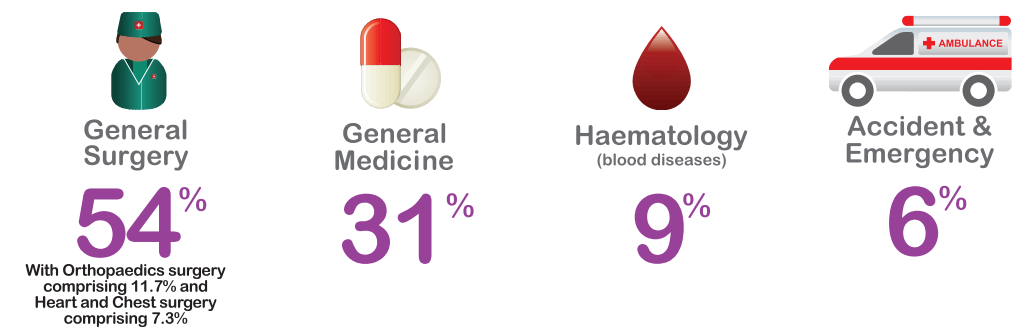
**115,976**  
Whole Blood Donations

**9,231**  
Apheresis Donations\*



\*Apheresis donation refer to donations of specific blood components such as platelets or plasma.

## Annual Estimate of Singapore's Blood Usage



## Life-Saving Components of Blood

Medical Condition	Average Number of Units Needed Per Patient
Dengue Haemorrhagic Fever	3 to 4 adult dose platelet units
Thalassaemia	3 to 4 red cell units per month
Coronary Artery Bypass Graft (CABG)	2 to 3 red cell units
Cancer Treatment	1 red cell units and 1 adult dose platelet unit daily
Stem Cell Transplant	1 red cell unit and 1 adult dose platelet unit daily
Road Traffic Accident	8 red cell units
Gastrointestinal Bleed	6 red cell units
Liver Transplant	10 red cell units



## Blood Processing and Testing

**371,743**  
blood components processed

**1,293,374**  
laboratory tests conducted on blood components

All donated blood collected is sent for processing and testing at the HSA's laboratories before it is transfused to patients.

## Estimated Blood Usage Rate for 2017



Copyright of Health Sciences Authority

Partners in the National Blood Programme



**Give Blood. Save Lives.**  
SINGAPORE

Donate at any of our blood banks today • Call us at **6220 0183** or visit **giveblood.sg** for more information.

**Bloodbank@HSA**  
Health Sciences Authority  
(Opposite Outram Park MRT Station)

**Bloodbank@Dhoby Ghaut**  
(Dhoby Xchange,  
Dhoby Ghaut MRT Station)

**Bloodbank@Westgate Tower**  
Westgate Tower  
(Jurong East MRT Station)

**Bloodbank@Woodlands**  
Woodlands Civic Centre  
(Opposite Causeway Point, Woodlands MRT Station)