

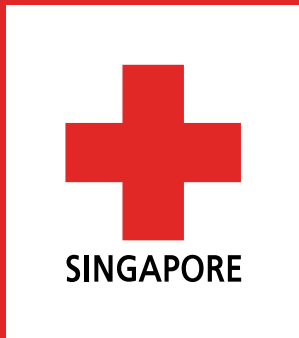
A low-angle, upward-looking shot of a red umbrella with a black metal frame. The ribs of the umbrella are visible, creating a radial pattern against the bright red fabric. The background is a solid, vibrant red.

IMPACT REPORT 2017

Rain or Shine. 365 Days a Year.

*We've got
you covered ☺*





VISION

To realise the Singapore Red Cross as a leading and distinctive humanitarian organisation that brings people and institutions together in aid of the vulnerable.

MISSION

Protecting human life and dignity, relieving human suffering and responding to emergencies.

CORE VALUES

Compassion, Passion and Professionalism.

7 FUNDAMENTAL PRINCIPLES



Humanity



Impartiality



Neutrality



Independence



Voluntary Service



Unity



Universality

Touching Hearts 24

- + ElderAid
- + FoodAid
- + TransportAid
- + HoME+
- + Red Cross Home for the Disabled

Saving Lives 30

- + Blood Donor Recruitment Programme
- + Community First Aid
- + Singapore Red Cross Academy

Achievements by the Numbers 04

Highlights of the Year 06

Chairman's Report 08

Message from CEO 12

Governance 16

Organisation Structure 17

Our Council 18

Our Committees 20

Our People 23

Bridging Communities 34

- + Community engagement
- + Volunteer engagement
- + Red Cross Youth

International Humanitarian Response 40

Partnerships & Fundraising 42

Financial Statements 43

CONTENTS

ACHIEVEMENTS BY THE NUMBERS

73,107
Blood donors



116,128
Whole Blood
donations



1,872
Hours clocked by
Community Befrienders



3,064
Instagram
followers



345
YouTube
subscribers



79,705
Facebook
fans



100
Families received
'Meals with Love'



9,000
Beneficiaries
helped by Project RICE



12
Clients
enriched by
the Day
Activity Centre



32,000
Lives saved by
blood transfusions



711
First Aid
courses
conducted



11,000
Man hours
invested in
Community
First Aid



10,405
Life-sustaining
trips on
TransportAid



500
Casualties
treated by
Community
First Aiders



10,710
People trained
in First Aid



1,101
Participants attended
First Aid awareness talks



\$4,192,100
Raised for local
humanitarian services



9
TransportAid
Vehicles



1,441
Beneficiaries
uplifted through
community services



92
Residents cared for
at Red Cross Home
for the Disabled



\$4,236,273
Generated in
Media Value



2,353
Volunteers
provided
community-level
support



5,083
Twitter
followers



2017 HIGHLIGHTS

APR

Awards for Excellence

In April, SRC clinched two accolades at the 2017 PRISM Awards - **Best Custom Publication** for **The Strength of the Human Spirit** photobook commemorating the 5th Anniversary Great East Japan Earthquake and Tsunami and **Outstanding Campaign by Non-Governmental Organisation (NGO)**, the latter together with public relations firm Weber Shandwick, for World Blood Donor Day 2016. Presented by the Institute of Public Relations Singapore (IPRS), the PRISM Awards recognise excellence in public relations and communications in Singapore.



MAY

Partnerships for Humanity - Rebuilding in Nepal Pg 35

In conjunction with the **2nd Anniversary of the Nepal Earthquake**, SRC hosted a one-day exhibition in Kathmandu, Nepal, on 4 May to showcase the results of our rebuilding efforts in Nepal.



JUL

5th Singapore Red Cross Awards Pg 37

Our patron President Tony Tan Keng Yam and SRC Chairman Tee Tua Ba presented awards to 28 individuals and 8 organisations at the **5th Singapore Red Cross Awards** on 25 July, for their dedicated humanitarian service.

Singapore Humanitarian Youth Summit Pg 38

On 1-2 July, SRC held its inaugural **Singapore Humanitarian Youth Summit**, featuring a series of lectures on pressing humanitarian issues and a symposium to foster discussions on humanitarian trends amongst youth.



SEP

International Bazaar Pg 42

The biennial Red Cross International Bazaar made its return on 23 September. Diplomatic missions, local enterprises and schools banded together in a **dazzling 50-stall showcase** to raise funds for SRC's local humanitarian services.



OCT

SRC Humanitarian Conference: Green Initiatives & Sustainability in Humanitarian Response

On 28 October, SRC hosted the **3rd Humanitarian Conference** which was attended by over 150 participants. Focusing on environmental protection and sustainability, the conference created a common platform for institutions, interested VWOs and volunteers for sharing of experiences and best practices.



NOV

Charity Transparency Award

On 5 November, we were awarded the Charity Transparency Award 2017 - **a recognition of our commitment in upholding the highest standards in transparency** - a key pillar in governance! This accolade is the third we received from the Charity Council, after the inaugural Charity Transparency Award 2016, and the prestigious Charity Governance Award 2013.



DEC

Charity Concert: Passage of Life Pg 42

Our 2017 charity concert "Passage of Life" took place on 16 December 2017 at Gateway Theatre. Featuring diverse aspects of the Peranakan vibrant culture and cuisine, the concert brought in **\$100,967**.

Service Expansion

To better serve our beneficiaries and cater more closely to their needs, we launched new services - Home Monitoring and Eldercare (HoME+) and Medical Chaperone & Transportation (MCT).



Innovative Therapies at RCHD

In addition to providing a safe haven for residents, Red Cross Home for the Disabled (RCHD) also offers therapy sessions to enhance their motor, cognitive and communicative skills. Different therapy targets or places emphasis on certain aspects of each skill and RCHD takes special care to provide a varied approach, to make the sessions interesting for our residents, and to encourage their participation. Our beneficiaries enjoy regular Animal Assisted Activities, Garden Therapy, as well as Baking Therapy, a new addition to our programme in 2017.





2016 had been a challenging year for all of us at Singapore Red Cross and looking back, I'm proud of what we have achieved in 2017.

The theme for our annual report this year, 'Everywhere for Everyone', encapsulates our Red Cross spirit perfectly. Over the past year, our dedicated volunteers, donors, partners and employees worked tirelessly - 365 days a year, 24 hours a day - to provide humanitarian service to tens of thousands of people in need, both in Singapore and abroad. Together, our framework of social services serves some of the most vulnerable and underserved communities in Singapore. These include the severely disabled, the skipped-generation households, chronically ill, the single-elderly, the single-parent, the working poor, and low-income families.

Notable Achievements in 2017

I am glad to share these highlights of the Society's local humanitarian efforts in the past year:

- Launched our Home Monitoring and Eldercare (HoME+) service;
- Commenced the Medical Chaperone & Transportation (MCT) programme;
- Embarked on new partnerships with:
 - Singapore Nurses Association to offer a collaborative platform for nurses to participate in local community services and overseas humanitarian programmes;
 - Republic Polytechnic to collaborate on overseas humanitarian projects, curriculum development, student internships, blood donation programmes, social enterprise initiatives and humanitarian outreach; and
 - Singapore Polytechnic on the launch of the Diploma-Plus Certificate Programme in Humanitarian Affairs;
- Hosted the inaugural Singapore Humanitarian Youth Summit to engage and educate youth on topics related to common humanitarian causes and needs;
- Expanded our First Aider On Wheels operations to Sentosa, after East Coast Park and Pulau Ubin; and
- Contributed to the collection of 116,128 units of whole blood, as the National Blood Donor Recruiter

On the international front, we provided relief and support in the immediate aftermath of disasters that occurred within our neighbouring regions. These include the Aceh Earthquake, Typhoon Damrey in Vietnam, as well as the displaced persons in Cox Bazar, Bangladesh. We continued to undertake and monitor the progress of a host of rebuilding and rehabilitation projects, in countries like Nepal, Philippines, Japan and China.

In May, we hosted an exhibition 'Partnerships for Humanity - Rebuilding in Nepal' to mark the 2nd Anniversary of the Nepal Earthquake and to showcase our rebuilding efforts in Nepal. Held in Kathmandu, the one-day exhibition featured the projects of 15 SRC partners that contributed to Nepal's road to recovery. The exhibition attracted several hundred visitors, including government officials and the media.

The Road Ahead

The work of the Red Cross, and in particular, the Singapore Red Cross, is an ongoing mission. The needs of individuals, families and communities do not stop after one has mitigated the immediate crisis. Often, there is a need for ongoing support; and SRC remains committed to rendering this support through our various humanitarian services. The humanitarian needs, even in a affluent society like Singapore, will continue to grow. The challenges ahead are great and SRC cannot afford to stagnate. With the ever-evolving humanitarian landscape and changing needs of the communities within Singapore, it is imperative that the Singapore Red Cross remains dynamic, paying close attention to the needs of the people we serve and continue evolving our services to remain relevant to meeting these needs. To accomplish this we - volunteers, members, supporters, and staff - must continue to work hand in hand, together for humanity.

Thank you for joining us on our mission to build a more resilient, cohesive and socially conscious Singapore. I would also like to express my heartfelt gratitude to our Council members; life, subscribing and youth members; volunteers; donors; and staff, for your valuable contributions over the past year.

Working together, I am confident we will continue to forge ahead on our humanitarian journey to relieve suffering and to strengthen community resilience for decades to come.

Tee Tua Ba
Chairman

主席报告

对于新加坡红十字会来说，2016年是充满挑战的一年。回望过去，我对大家在2017年取得的成绩感到十分骄傲。

今年，我们的年度报告主题“处处为人人”完美地概括了红十字会精神。在过去的一年里，我们的志愿者、捐赠者、合作伙伴和雇员都敬业、努力、坚持不懈 – 全年365天，每天24小时，全年无休，时刻在为新加坡和国外成千上万急需帮助的人提供人道主义服务。我们的社会服务框架为新加坡境内的弱势群体提供服务，当中包括身患严重残疾者、隔代家庭、慢性病患者、单身老人、单亲家庭、低薪人群和低收入家庭。

2017年的卓越成就

我很高兴在此与大家分享本协会在过去一年里在本地人道主义服务方面付出的努力

- 推出家庭监测辅助服务(HoME+)服务
- 展开医疗监护人及护送(MCT)计划；
- 与下列组织建立了合作伙伴关系：
 - 新加坡护士协会 – 旨在为护士参与本地社区服务和海外人道主义计划提供了一个合作平台；
 - 新加坡共和理工学院 – 旨在在海外人道主义项目、课程开发计划、学生实习计划、献血计划、社会企业计划和人道主义外展计划几大方面进行合作；以及
 - 新加坡理工学院 – 旨在推出人道主义事务附加文凭计划；
- 举办新加坡人道主义青年峰会，为青年一代提供一个探讨人道主义事业和需求相关主题的教育平台；
- 继东海岸公园和乌敏岛之后，将“流动急救员”服务范围扩展至圣淘沙岛；以及
- 作为国家捐血招募机构，筹获了116,128份的全血

在国际方面，我们为邻近地区受灾民众提供了援助和支持，其中包括在亚齐地震中受灾的印尼民众、在台风达维中受灾的越南民众和孟加拉国库克斯巴扎流离失所的难民。我们也在多个国家开展及监督重建和灾后恢复项目，其中包括尼泊尔、菲律宾、日本和中国。

我们也在五月举办了一场名为“全人类合作 – 尼泊尔重建家园”的展览，作为对尼泊尔地震两周年的纪念，同时展示我们在尼泊尔重建过程中付出的努力。为期一天的展览在加德满都举办，展出了新加坡红十字会的15位合作伙伴为尼泊尔复兴之路作出的贡献。此次展览吸引了数百人前来参观，其中包括政府官员和媒体。

展望未来

红十字会的工作是一项持续的使命。眼前的危机即使成功缓解，个人、家庭和社区的需求不会因此而停止。他们往往需要持续不断的支持，为此新加坡红十字致力于通过各种人道主义服务为弱势群体提供援助。即使在一个像新加坡一样富足的社会里，人道主义需求也在不断增加。前方的挑战十分严峻，新加坡红十字会不能停下脚步。随着人道主义事业不断演化和新加坡国内社区的需求不断变化，新加坡红十字会必须保持活力、密切关注被帮扶人群，并为满足他们的需求而改进我们的服务。为了实现这个目标，我们 – 志愿者、会员、支持者和员工 – 必须携手并肩，继续为人道主义事业而努力奋斗。

感谢您同我们一起努力，共同建设更加强大、更有凝聚力和社会意识的新加坡。我想向我们的理事会成员、终身会员、签约会员、青年会员、志愿者、捐赠者和员工表达衷心的感谢，感谢大家在过去一年里做出的伟大贡献。

我相信，在未来几十年里，我们一定会在推进人道主义事业的历程中携手并肩、努力进取，为减轻人们的痛苦和提高社区恢复能力贡献自己的力量。

郑大峇
主席

LAPORAN PENGGERUSI

2016 adalah tahun yang mencabar untuk kami semua di Palang Merah Singapura dan setelah mengimbas kembali, saya amat berbangga dengan pencapaian kami pada tahun 2017.

Tema bagi Laporan Tahunan tahun ini ialah, ‘Di mana-mana untuk Semua’, melingkupi semangat Palang Merah kami dengan sempurna. Sejak beberapa tahun lalu, sukarelawan, penderma, rakan kongsi dan kakitangan kami yang berdedikasi bekerja - 365 hari setahun, 24 jam sehari - untuk memberikan khidmat kemanusiaan kepada puluhan ribu orang yang memerlukan, di Singapura dan di luar negara. Rangka kerja khidmat sosial kami telah berkhidmat kepada beberapa masyarakat yang paling lemah dan kurang mendapat perhatian di Singapura. Ini termasuk mereka yang menghadapi kecacatan teruk (severely disabled), keluarga lat generasi atau keluarga memiliki anak-anak dijaga datuk dan nenek tanpa kehadiran ibu bapa sang anak (skipped-generation households), sakit kronik, warga emas tunggal, keluarga ibu atau bapa tunggal, golongan miskin yang bekerja, dan keluarga berpendapatan rendah.

Pencapaian yang Ketara pada tahun 2017

Saya gembira dapat berkongsi usaha-usaha Persatuan kami dalam kerja kemanusiaan tempatan pada tahun lalu:

- Melancarkan khidmat Pemantauan Rumah dan Penjagaan Warga Emas (HoME+);
- Memulakan program Pengiring Perubatan & Pengangkutan (MCT);
- Memulakan kerjasama baru dengan:
 - Persatuan Jururawat Singapura untuk menawarkan wadah untuk berkerjasama bagi jururawat yang mengambil bahagian dalam khidmat masyarakat tempatan dan program kemanusiaan luar negara;
 - Politeknik Republik untuk bekerjasama dalam projek-projek kemanusiaan luar negara, pembangunan kurikulum, latihan pelajar, program derma darah, inisiatif perusahaan sosial dan memperluas capaiannya dalam kemanusiaan; dan
 - Politeknik Singapura pada pelancaran Program Sijil Diploma-Tambahan dalam Hal Ehwal Kemanusiaan;
- Menganjurkan Sidang Kemuncak Belia Kemanusiaan Singapura yang pertama untuk mendekati dan mendidik belia mengenai topik yang berkaitan dengan punca serta keperluan kemanusiaan yang biasa;
- Memperluaskan operasi Bantuan Awal Kecemasan Bergerak (First Aider on Wheels) ke Sentosa, selepas East Coast Park dan Pulau Ubin; dan
- Menyumbang kepada pengumpulan 116,128 unit darah keseluruhan, sebagai Perekrut Penderma Darah Kebangsaan

Di peringkat antarabangsa, kami memberikan bantuan dan sokongan segera selepas bencana yang berlaku di kejiranan serantau kami. Ini termasuk Gempa Bumi Aceh, Taufan Damrey di Vietnam, serta pelarian di Cox Bazar, Bangladesh. Kami terus mengusahakan dan mengawasi kemajuan pelbagai projek pembinaan semula dan pemulihan, di negara-negara seperti Nepal, Filipina, Jepun dan China.

Pada bulan Mei, kami telah menganjurkan pameran Kerjasama untuk Kemanusiaan - Pembinaan semula di Nepal’ untuk menandakan Ulang Tahun ke-2 Gempa Bumi Nepal dan mempamerkan usaha pembinaan semula di Nepal. Diadakan di Kathmandu, pameran sehari itu menampilkan projek 15 rakan-rakan kongsi SRC yang telah menyumbang kepada perjalanan pemulihan Nepal. Pameran itu telah menarik beberapa ratus pelawat, termasuk pegawai kerajaan dan media.

Jalan yang Bakal Ditempuhi

Kerja-kerja Palang Merah, dan khususnya, Palang Merah Singapura adalah misi yang berterusan. Keperluan individu, keluarga dan masyarakat belum berakhir selepas seseorang itu telah dikurangkan dari krisis dengan segera. Seringkali, terdapat keperluan untuk sokongan yang berterusan; dan SRC akan tetap komited untuk memberikan sokongan ini melalui pelbagai khidmat kemanusiaan kami. Keperluan kemanusiaan akan terus berkembang walaupun dalam masyarakat yang mewah seperti Singapura. Cabaran-cabaran yang akan datang adalah besar dan SRC tidak mampu untuk tidak berkembang. Dengan landskap kemanusiaan yang sentiasa berubah dan perubahan keperluan masyarakat di Singapura, adalah penting untuk Palang Merah Singapura perlu kekal dinamik, memberi perhatian penuh terhadap keperluan mereka yang telah kami berkhidmat dan terus mengembangkan khidmat kami untuk kekal relevan bagi memenuhi keperluan ini. Untuk mencapai ini kami - sukarelawan, ahli-ahli, penyokong, dan kakitangan - perlu terus berusaha untuk bekerjasama demi kemanusiaan.

Terima kasih kerana menyertai kami dalam misi kami untuk membina Singapura yang lebih berdaya tahan, kohesif dan sedar secara sosial. Saya juga ingin merakamkan ucapan terima kasih yang tulus kepada anggota Majlis kami; kehidupan, ahli-ahli yang melanggan dan belia; sukarelawan; penderma; kakitangan, atas sumbangan berharga anda sepanjang tahun yang lalu.

Dengan kerjasama semua, saya yakin kami akan terus maju ke hadapan dalam perjalanan kemanusiaan untuk mengurangkan penderitaan dan memperkuatkan daya tahan masyarakat untuk beberapa dekad yang akan datang.

தலைவரின் அறிக்கை

டீ துவா பா பரதாசாமி, 2017 ஆம் ஆண்டின் ஆண்டின் தலைவர்

2016-ஆம் ஆண்டு, சிங்கப்பூர் செஞ்சிலுவைச் சங்கத்திலுள்ள நம் அனைவருக்கும் சவால்மிக்க ஆண்டாக அமைந்தது. அதனைப் பின்னோக்கிப் பார்க்கையில் 2017ல் நாம் சாதித்துள்ளதை எண்ணி, பெருமை கொள்கிறேன்.

இவ்வாண்டின் நமது ஆண்டறிக்கையின் கருப்பொருளான ‘எல்லோருக்கும் எங்கெங்கும்’ என்பது நமது செஞ்சிலுவை மனநிலையை நன்கு சுருக்கி உரைக்கிறது. கடந்த ஆண்டில், நம்முடைய அர்ப்பணிப்பு உணர்வுமிக்க தொண்டுறியர்களும், கொடையாளிகளும், பங்களிகளும் ஊழியர்களும் அபுராது உழைத்து – 365 நாட்களும், 24 மணி நேரம் ஒவ்வொரு நாளும் – மனிதாபிமான சேவையை, சிங்கப்பூரிலும் வெளிநாட்டிலும் உதவி தேவைப்படுகின்ற பத்தாபிரத்துக்கும் மேற்பட்ட மக்களுக்கு வழங்கி வந்தனர். நமது சமூக சேவைக் கட்டமைப்பு என்பது பலதரப்பட்ட பாதிக்கப்படக்கூடிய மற்றும் குறைவான சமூகங்களுக்கு சேவையாற்றி உள்ளது. இவை ஊனமுற்றோர், விடப்பட்ட தலைமுறை ஷடுகள், கடுமையான நோய்வாய்ப்பட்டோர், தனிமையாக இருக்கும் மூத்தோர், ஒற்றைப் பெற்றோர், வேலை செய்யும் ஏழை எளியோர் மற்றும் குறைந்த வருமான குடும்பங்களை உள்ளடக்கும்.

2017-ஆம் ஆண்டில் குறிப்பிடத்தக்க சாதனைகள்

கடந்த ஆண்டில் சங்கத்தின் உள்ளூர் மனிதாபிமான முயற்சிகளின் சிறப்பம்சங்களைப் பகிர்ந்துகொள்வதில் நான் மகிழ்ச்சியடைகிறேன்.

- ஷ்டு சார்ந்த கண்காணிப்பு மற்றும் முதியோர்நலன் (HoME+) சேவையின் தொடக்கம்
- சுகாதார துணைக்காவல் மற்றும் போக்குவரத்து திட்டத்தின் தொடக்கம்
- புதிய பங்களித்துவ தொடக்கங்கள்
 - தாதியர்கள், உள்ளூரிலும் வெளியூரிலும் சமூக சேவை மற்றும் மனிதாபிமான திட்டங்களில் பங்களிக்க, சிங்கப்பூர் செவிலியர் சங்கத்துடன் கூட்டுத் தளத் திட்டங்கள்
 - சிங்கப்பூர் ரிப்ப்ளிக் பலதுறைத் தொழிற்கல்லூரியுடன் ஒன்றிணைந்து வெளிநாட்டு மனிதாபிமான திட்டங்கள், பாடத்திட்ட வளர்ச்சி, மாணவர் உள்ளிருப்புப் பபிற்சி, இரத்த தான திட்டங்கள், சமூக நிறுவன முயற்சிகள் மற்றும் மனிதாபிமான முயற்சிகளில் எல்லை கடந்து செல்வதல்; மற்றும்
 - சிங்கப்பூர் பலதுறைத் தொழிற்கல்லூரியுடனான மனிதாபிமான அலுவல்களில் பட்டய மற்றும் சான்றிதழ் திட்டம்
- சிங்கப்பூர் இளையருக்கான மனிதாபிமான உச்சி மாநாட்டின் வாயிலாக இளையர்களை ஈடுபடுத்தி, அவர்களுக்குப் பொதுவான மனிதாபிமான காரணங்கள் மற்றும் தேவைகள் என்ற தலைப்புகளில் கற்பித்தல்
- கிழக்குக் கடற்கரை பூங்கா மற்றும் புலாவ் உபெனுக்குப் பின் செந்தோசாவில் நமது சக்கரங்களில் முதலுதவி இயக்கங்களின் விரிவாக்கம்; மற்றும்
- தேசிய இரத்த நன்கொடை ஆளெடுப்பில், 116,128 அலகு முழு இரத்த சேகரிப்புக்கான பங்களிப்பு

சர்வதேச நிலையில் நாங்கள் அண்டை வட்டாரங்களில் நடந்த பேரிடர்களில் உடனுக்குடன் நிவாரணமும் உதவியும் வழங்கினோம். இவை ஆச்சே நிவநடக்கம், வியட்நாமில் சூறாவளி டேம்ரே ஆகியவற்றையும், காக்ஸ் பஜாரில் இடம்பெயர்ந்த மக்கள் ஆகியோரையும் உள்ளடக்கும். நாங்கள் தொடர்ந்து பல மறுகட்டுமான மற்றும் மறுவாழ்வு திட்டங்களை நோலம், பிலிப்பைன்ஸ், ஐப்பான் மற்றும் சூனா போன்ற நாடுகளில் மேற்கொண்டு அவற்றைக் கண்காணித்தும் வருகிறோம்.

மே மாதம், ‘மனிதநேய ஆதரவின் கூட்டாதரவு – நோலில் மறுகட்டுமானம்’ என்று நாங்கள் வழிநடத்திய இரண்டாம் ஆண்டு நினைவுக் கண்காட்சியில், நோலில் நடந்த நிவநடுக்கத்தின்போது நாங்கள் மேற்கொண்ட மறுகட்டுமான முயற்சிகளை பற்றி வெளிக்காட்டினோம். காட்மாண்டுவில் நடத்தப்பட்ட இந்த ஒருநாள் கண்காட்சியில், நோலை மூப்புப் பாதையில் கொண்டு செல்ல உதவிய சிங்கப்பூர் செஞ்சிலுவைச் சங்கத்தின் பதினைந்து பங்குதாரர்களது திட்டங்கள் காட்டப்பட்டன. இந்தக் கண்காசட்சி, அரசாங்க அதிகாரிகள் மற்றும் ஊடகம் உட்பட, பல நூறு வருகையாளர்களை ஈர்த்தது.

எதிர்காலப் பாதை

செஞ்சிலுவை சங்கத்தின் பணி, குறிப்பாகச் சிங்கப்பூர் செஞ்சிலுவை சங்கத்தினானது நடப்பிலுள்ள பணி. ஓர் உடனடி நெருக்கடியை மட்டுப்படுத்தியதோடு தனிநபர், குடும்பங்கள் மற்றும் சமூகத்தின் தேவைகள் முடிவடைவதில்லை. பெரும்பாலும் தொடர்ந்த ஆதரவுக்கான தேவை இருக்கும்; இவ்வகையான ஆதரவை, பலவகையான மனிதாபிமான சேவைகள் மூலம் வழங்க, சிங்கப்பூர் செஞ்சிலுவைச் சங்கம் உறுதிகொண்டுள்ளது. சிங்கப்பூர் போன்ற செழுமையான சமூகத்திலும் மனிதநேய தேவைகள் தொடர்ந்து வளர்ச்சி காணும். பிற்காலத்திலுள்ள சவால்கள் மிகவும் பெரிதாக அமையும் நிலையில் சிங்கப்பூர் செஞ்சிலுவைச் சங்கத்தால் தேக்கமடைய முடியாது. உருவாகிவரும் மனிதநேய அமைப்புமுறையும் சிங்கப்பூர் சமூகங்கங்களின் மாறிவரும் தேவைகளும் சிங்கப்பூர் செஞ்சிலுவைச் சங்கம் தொடர்ந்து சக்தி வாய்ந்தாக இருந்தாகவேண்டிய கட்டாயத்தை ஏற்படுத்தியுள்ளது. நாங்கள் சேவையாற்றும் மக்களுடைய தேவைகளை உன்னிப்பாகக் கவனித்து எங்களுடைய சேவைகளைத் தொடர்ந்து உருவாக்கி, அவை தேவை இருப்பவர்களுக்குப் பொருத்தத்தக்கதாக அமைய வேண்டும் என்பதில் குறிப்பாக உள்ளோம். இதனைச் சாதிக்க எங்களுக்கு -தொண்டுறியர்கள்; உறுப்பினர்கள்; ஆதரவாளர்கள் மற்றும் வேலையாட்கள் – தொடர்ந்து மனிதநேயத்துக்குச் சேர்ந்துழைக்க வேண்டும்.

மேலும் ஒருகிணைந்த, மூளும்தன்மையுடைய, சமூக உணர்வுள்ள சிங்கப்பூரை உருவாக்கும் எங்களுடைய குறிக்கோளில் இணைந்தமைக்கு நன்றி. என்னுடைய மன்ற உறுப்பினர்கள்; வாழ்க்கை சந்தா செலுத்தும் மற்றும் இளையர் உறுப்பினர்கள்; தொண்டுறியர்கள்; நன்கொடை வழங்குபவர்கள்; மற்றும் வேலையாட்களுக்கு என்னுடைய மனமார்ப்ந்த தெரிவித்துக்கொள்ள விரும்புகிறேன்.

சேர்ந்து பணியாற்றினால், பல்லாண்டுகளுக்கு நம் மனிதநேய பயணத்தில் மேலும் முன்னேற்றமடைந்து துயரங்களை நீக்கவும் சமூக மூளும்தன்மையை வழுவாக்கவும் முடியும் என்பதில் நான் நம்பிக்கை கொண்டுள்ளேன்.

டீ துவா பா

தலைவர்

Tee Tua Ba
Pengerusi

Since 1949, Singapore Red Cross has been quietly championing the needs of the vulnerable within the community, both in Singapore and abroad. While the global humanitarian landscape and the social needs of the community has undergone tremendous change, the mission of the Singapore Red Cross remained unchanged - to help meet the needs of the most vulnerable. However, in order for SRC to remain relevant in meeting the evolving needs of our society, it is imperative for us to constantly review, re-examine ourselves and innovate - continually seeking to identify the emerging service gaps in the community; reviewing the impact and relevance of our services; and “tweaking” them to address unmet needs and serve the underserved. Often, we see the need to introduce new services.

In this regard, 2017 was a busy year for Singapore Red Cross. We launched several new programmes, embarked on partnerships and helmed a number of major events. A key challenge for some years has been our ability to mobilise financial resources. In late 2017, we initiated a directional change to our fundraising strategy so as to better support our expanding services - and the new Partnerships and Development team was born. Moving forward, we will focus our fundraising efforts on the cultivation of philanthropic giving, the implementation of face-to-face marketing and the development of strategic partnerships with third-party fundraisers. These will be complemented by our signature fundraising events and social enterprises.

We will also embark on an expansion of existing humanitarian services to provide enhanced support to the vulnerable members of the community, notably the lonely elderly. These include:

- The relocation of the Red Cross Home for the Disabled's Day Activity Centre, making it a standalone centre and increasing its capacity.
- Islandwide expansion of our Home Monitoring and Eldercare (HoME+) service and the Medical Chaperone & Transportation (MCT) programme
- Launch of Community HealthAid on Wheels to provide ancillary services to residents in the heartlands
- Implementation of Emergency Ambulance Service
- Introduction of Enterprise Model for TransportAid and HoME+ programmes to achieve a self-funded framework for sustainability
- Establishment of Social Workers Network, in addition to Nurses Network, to enhance our deployment capacity
- The launch of the Red Cross Junior - reaching out to pre-primary children and their parents with a comprehensive curriculum encompassing care for the elderly, the community and safety.
- Expansion of our Community Resilience programme to include reading and mentorship services to empower vulnerable children and youths - a truly Family Life Aid programme.

A major emphasis in 2018 would be to ramp up efforts to meaningfully engage the younger generation, and inculcate in them values and life skills that will give them a good start towards personal and community resilience. The Academy will launch the CET programme, with a series of short public courses that lead to a Certificate in Humanitarian Action. The Red Cross Youth looks set to spearhead a major resilience programme - the GO Bag for emergency preparedness.

Lastly, under the National Blood Programme, we will continue to develop and expand on our key partnerships (government ministries, grassroots organisations, corporate partners) to increase awareness of the importance of blood donation and to extend our strategic and operational reach. Reaching our youth to support the programme will remain a key priority.

In short, 2018 looks set to be yet another full year for us for serving humanity. I call upon each and every one of our supporters to continue partnering the Singapore Red Cross on our lifesaving mission.

MESSAGE FROM CEO

Benjamin William
Secretary General and CEO



自1949年以来，新加坡红十字会一直在默默努力，致力于满足新加坡境内和海外社区内弱势群体的需求。全球人道主义事业的发展和社会需求已经发生巨变，但新加坡红十字会的使命却始终如初 – 满足最弱势群体的需求。为确保新加坡红十字始终能够满足不断变化的社会需求，我们必须不断回顾过去、重新审视自我并持续创新，发现社区中新出现的服务断层；回顾我们服务的影响力和关联性；不断调整，致力于满足尚未满足的需求，为难以获得服务的人群提供服务。在此过程中，我们经常会看到引入新服务的必要性。

就这一点而言，2017是新加坡红十字会格外忙碌的一年。我们开展了几个新项目，落实了合作，举办了一些大型活动。这些年来我们的关键挑战之一一直是调动财政资源的能力。2017年后半年，我们开始直接改变募捐策略，以便更好地为我们拓展服务提供支持，于是，新合作关系及发展团队应运而生。接下来，我们会将募捐工作的重点放在慈善捐款、面对面市场营销以及发展与第三方募捐机构之间的战略合作伙伴关系上。同时，我们还会通过签名筹款活动和社会企业活动为上述工作提供补充。

我们同样将会着手扩大现有人道主义服务，为社区弱势群体提供更好的支持，尤其是老年群体。这些服务包括：

- 为残疾人日间活动中心重新安置红十字之家，使其成为独立中心，增加容量。
- 全岛范围内推广我们的家庭监测和老年护理服务(HoME+)，以及医疗陪护和运输项目(MCT)
- 推行社区残疾人健康救助，为岛中心地区居民提供辅助服务。
- 实施救护车服务。
- 引入企业运输救助模式以及HoME+项目，实现自费的可持续框架。
- 建立社工网络，加入护工网络，提高我们的部署能力。
- 推行红十字会青少年组织，为学前儿童及其父母提供全面的课程，包括老年护理和社区安全。
- 扩展我们的社区恢复计划，纳入阅读和导师服务，帮助弱势儿童和青少年提高能力 – 这是一个真正的家庭生活救助计划。

2018年，我们的工作重点之一是加大力度，让年轻一代以更有意义的方式参与进来，培养他们的价值观和生活技能，旨在帮助他们提高个人能力，进而提高社区的恢复能力。学院将会启动CET计划，提供一系列短期公开课，学员结课即可获得人道主义行动证书。红十字会青少年组织将全力以赴，带头推行一个大型恢复计划 – 紧急应对包(Go Bag) 应急准备项目。

最后，我们将在国家血液计划之下继续发展、拓展我们的主要合作伙伴关系(政府部门、基层组织和企业合作伙伴)，提高人们对献血重要性的认识，扩展我们的战略和运营范围。争取青少年对本计划的支持始终是我们的头等大事。

简而言之，2018年将会是我们致力于为全人类服务的又一个繁忙的年度。我呼吁每一位支持者继续同新加坡红十字会合作，共同完成救助生命的使命。

首席执行官致辞

班杰明·威廉
秘书长兼首席执行官

MESEJ DARIPADA CEO

Sejak tahun 1949, Palang Merah Singapura secara diam, memperjuangkan keperluan golongan yang memerlukan dalam kalangan masyarakat, di Singapura dan di luar negara. Walaupun landskap kemanusiaan global dan keperluan masyarakat sosial telah mengalami perubahan yang luar biasa, misi Palang Merah Singapura (SRC) kekal tidak berubah - untuk membantu memenuhi keperluan golongan paling memerlukan. Walau bagaimanapun, agar SRC kekal relevan dalam memenuhi keperluan masyarakat yang semakin berkembang, kami perlu terus mengkaji, memeriksa semula diri kami dan berinovasi - terus berusaha demi mengenal pasti jurang perkhidmatan yang muncul dalam masyarakat; mengkaji kesan dan kaitan perkhidmatan kami; dan “mengubahnya” untuk menangani keperluan yang tidak dipenuhi dan berkhidmat kepada golongan yang kurang mendapat perhatian. Lazimnya, kami melihat keperluan untuk memperkenalkan perkhidmatan baru.

Dalam hal ini, 2017 merupakan tahun yang sibuk untuk Palang Merah Singapura. Kami telah melancarkan beberapa program baru, memulakan perkongsian dan menerajui beberapa acara utama. Cabaran utama untuk beberapa tahun telah menjadi keupayaan kami untuk menggerakkan sumber kewangan. Pada akhir 2017, kami telah memulakan perubahan arah kepada strategi pengumpulan dana untuk menyokong perkhidmatan yang berkembang - pasukan Perkongsian dan Pembangunan telah dicipta. Melangkah ke hadapan, kami akan menumpukan perhatian usaha pengumpulan dana untuk penanaman dermawan, pelaksanaan pemasaran bertemu secara berhadapan dan pembangunan perkongsian strategik dengan pengumpulan dana pihak ketiga. Ini akan dilengkapkan dengan acara pengumpulan dana dan perniagaan sosial kami.

Kami juga akan memulakan pengembangan perkhidmatan kemanusiaan sedia ada untuk menyediakan sokongan yang lebih baik kepada anggota masyarakat yang memerlukan, terutamanya warga emas yang kesepian. Ini termasuk:

- Penempatan semula Rumah Palang Merah untuk Pusat Aktiviti Hari Orang Kurang Upaya, menjadikannya pusat yang berdiri sendiri dan meningkatkan kapasitinya.
- Peluasan di seluruh negara untuk perkhidmatan Pemantauan Rumah dan Perkhidmatan Penjagaan Warga Emas (HoME +) serta program Caperon Perubatan & Pengangkutan (MCT)
- Pelancaran Komuniti Bantuan Kesihatan Bergerak untuk menyediakan perkhidmatan sampingan kepada penduduk di kawasan tengah
- Pelaksanaan Perkhidmatan Ambulans Kecemasan
- Pengenalan Model Perusahaan untuk program Bantuan Pengangkutan dan HoME + untuk mencapai rangka kerja yang dibiayai sendiri untuk kemampanan
- Penubuhan Rangkaian Pekerja Sosial, sebagai tambahan kepada Rangkaian Jururawat, untuk meningkatkan keupayaan penempatan kami
- Pelancaran Junior Palang Merah - mendekati kanak-kanak prasekolah dan ibu bapa mereka dengan kurikulum komprehensif yang merangkumi penjagaan warga tua, masyarakat dan keselamatan.
- Memperluas program Ketahanan Masyarakat kami untuk merangkumi perkhidmatan membaca dan bimbingan untuk memperkasakan kanak-kanak dan golongan muda yang memerlukan - program Bantuan Kesihatan Keluarga sejati.

Penekanan utama pada tahun 2018 adalah meningkatkan usaha untuk melibatkan generasi muda dengan bermakna, dan menanamkan nilai-nilai dan kemahiran hidup yang akan memberi mereka permulaan yang baik terhadap daya tahan peribadi dan masyarakat. Akademi akan melancarkan program CET, dengan satu siri kursus awam pendek yang memberikan Sijil Aksi Kemanusiaan. Belia Palang Merah kelihatan bersedia untuk menerajui program ketahanan utama - GO Bag untuk kesediaan kecemasan.

Akhir sekali, di bawah Program Darah Nasional, kami akan terus membangun dan mengembangkan perkongsian utama kami (kementerian kerajaan, organisasi akar umbi, rakan kongsi korporat) untuk meningkatkan kesedaran tentang pentingnya pendermaan darah dan untuk memperluas jangkauan strategik serta operasi kami. Mendekati generasi muda untuk menyokong program ini kekal menjadi keutamaan

Secara ringkas, nampaknya tahun 2018 akan menjadi tahun yang sibuk untuk berkhidmat kepada manusia. Saya menyeru setiap penyokong kami untuk meneruskan perkongsian Palang Merah Singapura dengan misi menyelamatkan nyawa.

	
Benjamin William	
Ketua Setiausaha dan Ketua Pegawai Eksekutif	

தலைமை நிர்வாக அதிகாரியின் செய்தி

1949-ஆம் ஆண்டிலிருந்து சிங்கப்பூர் செஞ்சிலுவை சங்கம் அமைதியான முறையில், உள்ளூரிலும் வெளியூரிலும் எளிதில் பாதிப்படையக்கூடியவர்களின் நலனுக்காகப் பாடுபட்டு வருகிறது. உலகளாவிய மனிதாபிமான அமைப்புமுறையும் சமூகத்தின் சமூக தேவைகளும் பல்வேறு மாற்றங்களைக் கண்டிருந்தாலும், சிங்கப்பூர் செஞ்சிலுவை சங்கத்தின் குறிக்கோள் மாறாமல் அப்படியே உள்ளது - எளிதில் பாதிப்படையக்கூடியவர்களுடைய தேவைகளைப் பூர்த்தி செய்வதே அது. ஆனால், சிங்கப்பூர் செஞ்சிலுவைச் சங்கம், தொடர்ந்து மாறிவரும் சமூகத்தின் தேவைகளைப் பூர்த்தி செய்யவும் தொடர்புடைய நிலையில் இருக்கவும், நாம் எப்போதும் மறு ஆய்வு, மற்றும் மதிப்பீடு செய்து புத்தாக்கம் செய்ய வேண்டும் – சமூகத்துக்கு நாம் வழங்கும் சேவைகளில் ஏற்படக்கூடிய இடைவெளியைத் தொடர்ந்து கண்டறிய வேண்டும்; நமது சேவைகளின் தாக்கத்தையும் பொருந்துவமையையும் மதிப்பீடு செய்ய வேண்டும்; அதனில் சிறு சிறு மாற்றங்களைக் கொண்டு வந்து கண்டுகொள்ளப்படாத தேவைகளைக் கண்டறிந்து அவற்றைப் பெறாதவர்களுக்கு வழங்க வேண்டும். இதனால், அடிக்கடி புதிய சேவைகளை அறிமுகப்படுத்த வேண்டிய அவசியம் உள்ளது.

இந்த நிலையில், **2017-**ஆம் ஆண்டு சிங்கப்பூர் செஞ்சிலுவைச் சங்கத்துக்கு ஒரு மும்மரமான ஆண்டாக விளங்கியது. நாங்கள் பல புதிய திட்டங்களை அறிமுகப்படுத்தி, புதிய கூட்டாண்மைகளை தொடங்கி மற்றும் பல பெரிய நிகழ்ச்சிகளை வழிநடத்தினோம். சில ஆண்டுகளாக நமக்குச் சவாலாக அமைந்தது பொருளாதார வளங்களை ஆயத்தமாக்குவது. **2017-**ஆம் ஆண்டு இறுதியில், நிதி திரட்டும் உத்தியில் ஒரு திசை மாற்றத்தைத் தொடங்க – ஒரு புதிய கூட்டாண்மை மற்றும் வளர்ச்சிக் குழு உருவாக்கம் கண்டது. இதன் வாயிலாக விரிவடைந்துவரும் நமது சேவைகளுக்கு நன்கு ஆதரவு வழங்க இது துவங்கப்பட்டது. முன்னோக்கிப் போகும் நிலையில் தொண்டு வழங்கும் பணிபினை வளர்க்க, நாங்கள் எங்களுடைய நிதி திரட்டும் முயற்சிகளில் கவனம் செலுத்தி, நேருக்கு நேர் சந்தைப்படுத்துதலை செயல்படுத்தி, மூன்றாம் தரப்பு நிதி திரட்டுபவர்களோடு மூலோபாய கூட்டாண்மையை வளர்த்துக்கொள்ளப் போகிறோம். இவற்றைப் பூர்த்தி செய்ய நமது மிக முக்கிய நிதி திரட்டும் நிகழ்ச்சிகளும் சமூக நிறுவனங்களும் உதவும்.

நாங்கள் தற்போதைய மனிதாபிமான சேவைகளை விரிவாக்கம் செய்து சமூகத்தில் பாதிப்படையக்கூடியவர்கள், குறிப்பாகத் தனிமையான மூத்தோருக்கு கூடுதல் ஆதரவு வழங்க இருக்கிறோம். அதில்:

- செஞ்சிலுவை இல்லத்தின் ஊனமுற்றோர் நாள் செயல்பாடு மையம் இடம்பெயர்த்து முழுமையான மையமாக மாற்றி அதன் கொள்திறத்தைக் கூட்டுதல்
- தஃவு முழுவதும் ஷ்டு மற்றும் மூத்தோர் ஷீட்டுநலன் (HoME+) சேவையின் விரிவாக்கம் மற்றும் மருத்துவ இளம் பெண்ணின் துணைக்காவல் மற்றும் போக்குவரத்து (MCT) திட்டம்
- சமூக சுகாதாரஉதவி சக்கரங்களில் (Community HealthAid on Wheels) துவக்கத்தின் மூலம் மையப்பகுதிகளில் உள்ள குடிபிரொப்பாளர்களுக்கு துணைச் சேவைகள்
- அவசரக்கால மருத்துவ வண்டி சேவை தொடக்கம்
- சுய நிதி கட்டமைப்பு மூலம் நிலையான நிலையை அடைய தொழில்முனைப்பு மாதிரி அறிமுகத்தால் போக்குவரத்துஉதவி (TransportAid) மற்றும் ஷ்டு+ (HoME+) திட்டங்கள்
- வேலையிடத்து எண்ணிக்கையை மேம்படுத்த தாதியர் வலையமைப்போடு சமூக வேலையாட்கள் வலையமைப்பை நிறுவுதல்
- பாலர் செஞ்சிலுவையின் தொடக்கம் – பாலர் பள்ளி சிறுவர்கள் மற்றும் அவர்களுடைய பெற்றோர்கள் இருசாராருக்கும் விரிவான பாடத்தின் மூலம் அவர்களை மூத்தோர், சமூகம் மற்றும் பாதுகாப்பில் அக்கறை செலுத்தபவர்களாக உருவாக்குவது.
- பாதிப்படைந்துள்ள சிறுவர்கள் மற்றும் இளையர்களுக்கு வாசித்தல் மற்றும் வழிகாட்டல் சேவைகள் மூலம் சமூக மீளும்தன்மை திட்டத்தின் விரிவாக்கம் – உண்மையான குடும்ப வாழ்க்கை உதவித் திட்டம்.

2018-ஆம் ஆண்டில் முக்கிய வலியுறுத்தலாக இளைய தலைமுறையினரை அர்த்தமுள்ள வகையில் ஈடுபடுத்துவதிலும் அவர்களுக்கு விழுமங்களையும் வாழ்க்கைத் திறன்களையும் வழங்குவதிலும், அவர்களுக்குத் தனிப்பட்ட மற்றும் சமூக மீளும்தன்மையில் நல்ல தொடக்கத்தைக் கொடுப்பதிலும் முயற்சிகள் அதிகரிக்கப்படும். கலைக்கழகம் சி.யி.டி (CET) என்ற திட்டத்தைத் தொடங்கி, சிறு சிறு பொதுவான பாடக்கோப்புகளை வழங்கி அதன் மூலம் மனிதநேய செயலாக்கம் என்ற சான்றிதழ் பெற வழிசெய்யும். செஞ்சிலுவை இளையர் பிரிவு, ‘கோ பெக்’ (GO Bag) என்ற ஒரு பெரிய மீளும்தன்மை திட்டத்தை அவசரகால தயார்நிலைக்காக வழிநடத்த தயாராக உள்ளது.

இறுதியாக, தேசிய இரத்த திட்டத்தின்கீழ், நாங்கள் தொடர்ந்து முக்கிய கூட்டாண்மைகளை மேம்படுத்தியும் விரிவாக்கமும் செய்து (அரசாங்க அமைச்சுகள், அடித்தள அமைப்புகள், பெருநிறுவன பங்காளிகள்) இரத்தத் தானத்தின் முக்கியதுவத்தைப் பற்றிய விழிப்புணர்வை அதிகரித்து மூலோபாய மற்றும் செயல்பாட்டை அடைவை நீட்டிப்போம். இளையர்களைக் கொண்டு இந்தத் திட்டத்துக்கு ஆதரவு பெறுவது முக்கிய முன்னுரிமையாக இருக்கும்.

சுருங்கக் கூறின், **2018-**ஆம் ஆண்டு முழுவதும் நாங்கள் மனிதநேயத்துக்குப் பணியாற்ற வேண்டிய இன்னொரு ஆண்டாக இருக்கும். எங்களுடைய ஒவ்வொரு ஆதரவாளர்களையும், சிங்கப்பூர்ச் செஞ்சிலுவைச் சங்கம் ஈடுபட்டுள்ள உயிர்காக்கும் பணியில் தொடர்ந்து எங்களுடன் சேர்ந்து செயல்ாற்ற நான் அழைக்கிறேன்.

பெஞ்சமின் வில்லியம்
பொது செயலாளர் மற்றும் தலைமை நிர்வாக அதிகாரி

GOVERNANCE

The work of the Red Cross in Singapore began on 30 September 1949 as a branch of the British Red Cross. On 6 April 1973, it was incorporated as an Act of Parliament and became known as the Singapore Red Cross (SRC).

The SRC is governed by a 19-member Council headed by a Chairman who is appointed by the President of the Republic of Singapore, the Patron of the SRC. The Council is responsible for pursuing the objective of the SRC as laid down by the Act of Parliament and its Constitution. The Council has four oversight committees providing the relevant advice and expertise; namely the Finance and Investment, Audit, Corporate Governance and Nomination and Human Resource and Compensation Committees.

The general management of the SRC is overseen by the Management Committee, headed by the Secretary General / Chief Executive Officer (CEO) of the SRC. Implementation of the policies and directives laid down by the Council is done by the Secretariat which is headed by the Secretary General / CEO.

The Secretariat is organised into three divisions; Operations, Administration and the Red Cross Youth. The strength and commitment of our volunteer corps is critical for the realisation of our vision and to carry out our vision. Volunteers and staff work closely together in planning, organising and implementing the activities and programmes of the SRC.

In 2013, SRC was awarded the Charity Governance Award which honours charities that have adopted the highest standards of governance and implemented the best practices to ensure sustained effectiveness.

Consecutively in 2016 and 2017, we received the Charity Transparency Award for being one of the nation's best governed charities.

This attests to SRC's commitment in upholding the highest standards in transparency - a key pillar in governance.



PROCEDURES

The assets of the charity are held for the purpose of furthering its humanitarian objectives, which includes maintaining and ensuring physical resources as well as working capital to develop and support these objectives. Financial obligations and commitments are reflected in the financial statements. The SRC has in place policies and procedures to manage and avoid situations of conflict of interest. Volunteers, staff and board members are advised to avoid situations that may give rise to conflict of interest and are required to make full declaration and disclosure should it inevitably arise. This is to ensure that all parties will act in the best interest of the Society.

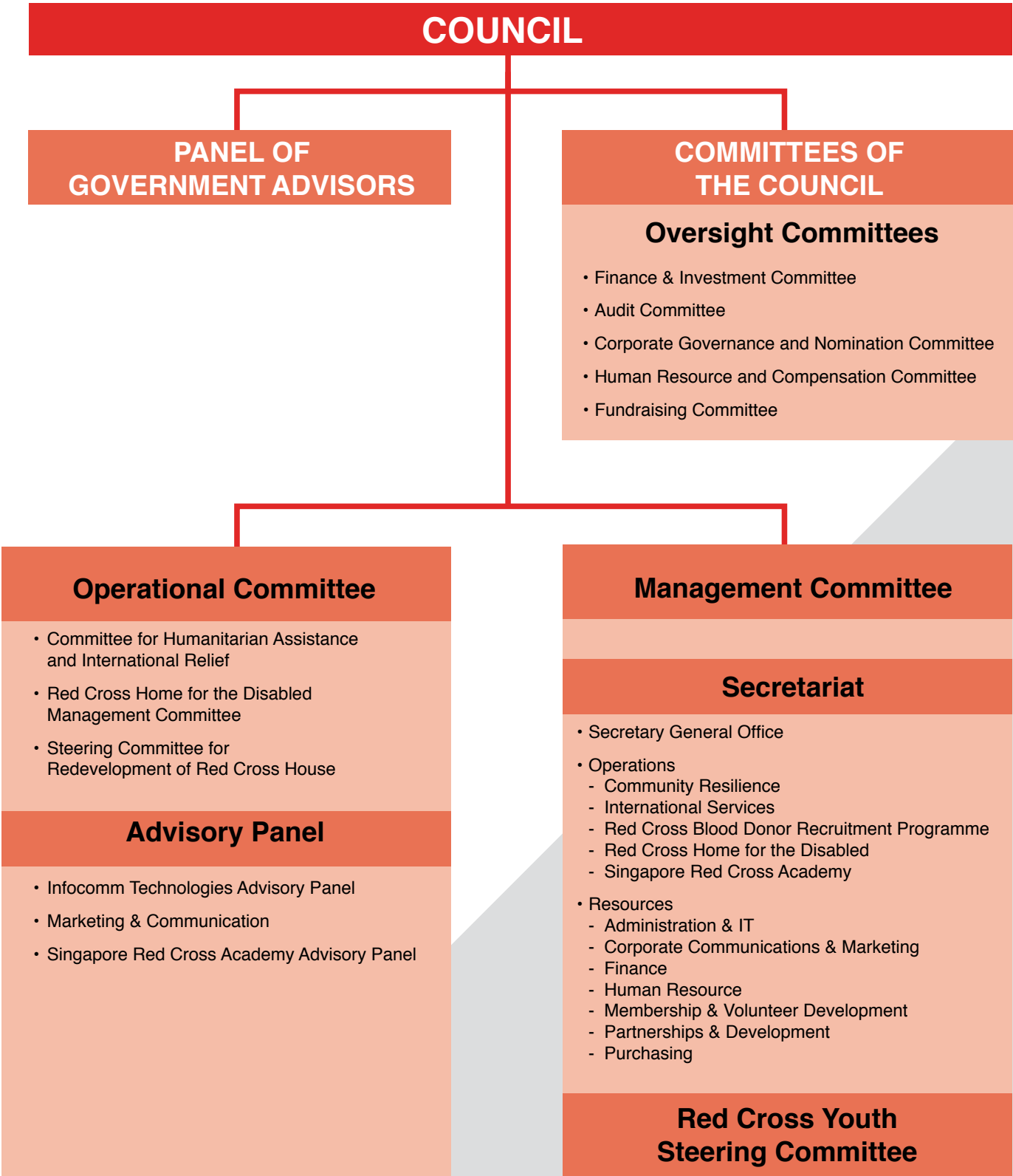
ANNUAL AUDIT

The accounts for the year were audited by Deloitte & Touche LLP, Public Accountants and Chartered Accountants. The financial statements of the SRC for the year ended 31 December 2017 are prepared in accordance with the Financial Reporting Standards in Singapore.

INVESTMENT POLICY AND OBJECTIVES

The Finance and Investment Committee reviews and invests the SRC's funds in accordance with the Trustee's Act and in compliance with the guidelines set by the Council. The SRC's funds are currently invested in quasi-government and corporate fixed income bonds, preference shares in local financial institutions and deposits in financial institutions. These investments are made with the primary objective of capital preservation and to provide an investment return for the Society. The portfolios are closely monitored and periodic reviews are conducted by the Finance and Investment Committee.

ORGANISATIONAL STRUCTURE





Mr Benjamin William
Secretary General / CEO



Mr Tee Tua Ba
Chairman



Mr Eric Low
Council Member



Dr Chan Soon Keng
Council Member



Ms Emily Tan
Council Member



**Dr Saiful Nizam
Bin Subari**
Council Member

Mr Chris Liew
Council Member



Mr Ling Khoon Chow
Council Member



Dr Mark Hon
Vice Chairman



Mr Tan Kai Hoe
Vice Chairman



Ms Tan Poh Hong
Council Member



Mr Winston Milner
Council Member

Mr Laurence Goh
Council Member

Our Patron

The President of the Republic of Singapore

Madam Halimah Yacob (from September 2017) • Dr Tony Tan Keng Yam (from 2011 to 2017)

Our Council **Chairman** Mr Tee Tua Ba **Vice Chairmen** Dr Mark Hon • Mr Tan Kai Hoe (from 27 June 2017) **Chairman of Corporate Governance and Nominations Committee** Dr Mark Hon (from 27 June 2017) **Chairman, Finance and Investment Committee** Dr Mark Hon (up to 26 June 2017) • Mr Tan Kai Hoe (from 27 June 2017) **Chairman, Audit Committee** Mr John Tang (up to 26 June 2017) • Mr Chris Liew (from 27 June 2017) **Chairman, Red Cross Home for the Disabled Management Committee** Mr Benjamin William **Chairman, Red Cross House Development Committee** Ms Emily Tan **Chairman, Singapore Red Cross Academy Advisory Panel** Prof (Dr) V Anantharaman **Secretary General/Chief Executive Officer (CEO)** Mr Benjamin William

Members

Mr Zulkifli Baharuddin (up to 26 June 2017) • Dr Caroline Brassard (up to 26 June 2017) • Dr Chan Soon Keng • Mr Chew Hai Chwee (up to 26 June 2017) • Mr Laurence Goh • Mr Ling Khoon Chow (from 27 June 2017) • Mr Eric Low • Mr Winston Milner • Dr Phua Kai Hong (up to 26 June 2017) • Ms Roshini Prakash Nair • Dr Saiful Nizam Bin Subari (from 27 June 2017) • Mr Tan Chong Huat (up to 26 June 2017) • Ms Tan Poh Hong (from 27 June 2017) • Mr Allan Yeo

OUR COMMITTEES

Panel of Government Advisers

Ministry of Culture, Community and Youth, Mr Ng Chun Pin
Ministry of Defence, Ms Yeo Seow Peng
Ministry of Education, Mdm Loh Jia Miin (up to 26 Jun 2017)
Ministry of Education, Mdm Sarah Leong Chui Yin (from 27 Jun 2017)
Ministry of Foreign Affairs, Mr Laurence Bay (up to 26 Jun 2017)
Ministry of Foreign Affairs, Mr Lee Chong Hock (from 27 Jun 2017)
Ministry of Health, Dr Lim Ghee Hian
Ministry of Health Mr Mark Tan (Alternate member)
Ministry of Home Affairs, COL Ling Young Ern (up to 26 Jun 2017)
Ministry of Home Affairs, LTC Chua Swee Leong (from 27 Jun 2017)

Oversight Committees

Finance and Investment Committee

Chairman

Mr Tan Kai Hoe (from 27 Jun 2017)
Dr Mark Hon (up to 26 Jun 2017)

Members

Mr Eric Low
Mr Laurence Goh
Ms Lim Choon Noi
Mr Han Eng Juan
Mr Allan Yeo (from 27 Jun 2017)
Assoc Prof (Dr) Phua Kai Hong (up to 26 Jun 2017)

Audit Committee

Chairman

Mr Chris Liew (from 27 Jun 2017)
Mr John Tang (up to 26 Jun 2017)

Members

Dr Mark Hon (from 27 Jun 2017)
Mr Axel Chan (from 27 Jun 2017)
Ms Tan Poh Hong (from 27 Jun 2017)
Ms Roshini Prakash (from 27 Jun 2017)
Mr Chew Hai Chwee (up to 26 Jun 2017)
Mr N Sreenivasan (up to 26 Jun 2017)
Mr Zulkifi Baharuddin (up to 26 Jun 2017)
Mr Tan Kai Hoe (up to 26 Jun 2017)
Mr Chris Liew (up to 26 Jun 2017)

Corporate Governance & Nomination Committee

Chairman

Assoc Prof (Dr) Phua Kai Hong (up to 26 Jun 2017)
Dr Mark Hon (from 27 Jun 2017)

Members

Mr Axel Chan
Mr Chew Hai Chwee
Mrs Susan Chan
Mr Winston Milner (from 27 Jun 2017)
Dr Chan Soon Keng (from 27 Jun 2017)
Mr N Sreenivasan (from 27 Jun 2017)
Prof (Dr) V Anantharaman (up to 26 Jun 2017)
Ms Roshini Prakash Nair (up to 26 Jun 2017)

Human Resource & Compensation Committee
(Human Resources Department)

Chairman

Dr Caroline Brassard

Members

Ms Ruth Chan
Ms Nica Foo
Mr Ling Khoon Chow
Mr Winston Milner
Dr Chan Soon Keng
Mr Edwin Seah
Mr Stephane Michaud
Mrs Susan Chan
Mr Eleutherius Liew

Fund Raising Committee (Fundraising Department)

Chairman

Mr Tan Chong Huat (up to 26 Jun 2017)

Members

Mr Allan Yeo
Mr Raymond Tang
Mrs Peggy Jeffs
Mr Markham Shaw
Mr Alvin Yapp
Ms Terene Seow

Management Committee

Chairman

Mr Benjamin William

Members

Mr Prathivmohan Chandramohan
Mr Mohammad Zaidi Ariffin
Mr Elisha Teo
Mr Edwin Seah (up to 26 Jun 2017)
Mr Steven Choo
Mr Sahari Ani
Ms Serene Chia
Mr Robert Teo
Mr Isaac Tiong

Operational and Advisory Committees
Steering Committee for Redevelopment
of Red Cross House

Chairperson

Ms Emily Tan

Members

Dr Mark Hon
Prof Heng Chye Kiang
Mr Chris Liew
Prof Lau Joo Ming
Mr Allan Yeo
Mr Lee Hay Keong
Mr Benjamin William

Red Cross Home for the Disabled Management
Committee (Red Cross Home for the Disabled)

Chairman

Mr Benjamin William

Advisers

Mr W R Rasanayagam
Dr D R Paul

Members

Dr Chan Soon Keng
Mr Malcolm Lim
Ms Noor Afiza Bte Mohd Ali (up to 25 May 2017)
Mr David Alexander Ong
Ms Roshini Prakash Nair
Dr David Su
Ms Emily Tan
Mr Raymond Tang
Ms Siti Zawiyah Bte Mohamad (from 14 Sep 2017)

Committee for Humanitarian Assistance & International
Response (International Service Department)

Chairman

Mr Chew Hai Chwee

Members

Mr Laurence Goh
Ms Cynthia Phua
Mr Saiful Nizam bin Subari
Ms Emily Tan
Mr Benjamin William
Ms Cheah Sheau Lan (from 11 Dec 2017)

Infocomm Technologies Advisory Panel

Chairman

Mr Steve Lee

Members

Mr Winston Chew
Mr Varun Acharya
Mr Loon Sum Loon (from 1 Dec 2017)
Mr Adrian Kwong (from 1 Dec 2017)

Singapore Red Cross Academy Advisory Panel
(Singapore Red Cross Academy)

Chairman

Prof (Dr) V Anantharaman

Members

Dr Mark Leong
Ms Pat Loh
Dr Suresh Pillai
Ms Joelle Yap
Mr Sahari Ani (from 27 Jun 2017)
Mr Chew Lip Heng (from 27 Jun 2017)

Marketing Communications Advisory Panel
(Corporate Communications and Marketing
Department)

Chairman

Mr Goh Chee Kong

Advisor

Ms Rose Tan

Members

Mr Jeffrey Lim
Mr David Shaw
Ms Eleanor Slade
Mr Jay Soo
Ms Tan Su Yuen

Charity Golf

Chairperson

Mr Tan Chong Huat

Tournament Director

Mr William Toh

Committee Members:

Mr Chew Hai Chwee
Mr Ho Kee Sin
Mr Edwin Seow
Mr Seah Cheng San

Shop@REDCROSS at Red Cross House

Ms Ebenazer William
Ms Navaratnarajah Alice Pavalaratnam

Shop@REDCROSS at Jalan Khairuddin
Enterprise Leader

Ms Lim Li Hoon

Assistant Leader

Mrs Gaw Kian Lay

SRC Nurses' Network Steering Committee

Chairman

Mrs Evelyn Bonney

Members

Mr Oslee Omar Kwang
Ms Salmon Law Wen Yu
Ms Tessly Goh
Ms Stella Le
Ms Selene Ong
Mr Lukman Kasmani Minhad
Mr Sudirman Bin Othman

Red Cross Youth Steering Committee

Director

Mr Sahari Ani

Deputy Director

Mr Edwin Seah
Mr Prathivmohan Chandramohan

Assistant Director, Strategic Planning

Mr Mohammad Zaidi Ariffin

Assistant Director, Governance, Risk & Compliance

Mr Ambrose Lee

Assistant Director, Curriculum Planning
and Development

Mr Abdul Hadi Abdul Wahab

Coordinating Assistant Director, Operations

Mr Teo Wei Yang

Coordinating Assistant Director, Links

Ms Regina Loh

Coordinating Assistant Director, Cadets

Ms Tai Wai Peng

Coordinating Assistant Director, Chapters
Mr Amos Kow

Coordinating Assistant Director, Youth Members @District
Ms Daphne Goh

Red Cross Youth Schools Links

Ang Mo Kio Primary School
Angsana Primary School
Blangah Rise Primary School
Boon Lay Garden Primary School
Bukit Panjang Primary School
Bukit View Primary School
Cantonment Primary School
Chongfu School
Chua Chu Kang Primary School
Compassvale Primary School
Concord Primary School
Coral Primary School
Corporation Primary School
Damai Primary School
De La Salle School
Eunos Primary School
Fairfield Methodist School (Pri)
Fengshan Primary School
Frontier Primary School
Fuhua Primary School
Greendale Primary School
Haig Girls' School
Holy Innocents' Primary School
Innova Primary School
Jiemin Primary School
Jing Shan Primary School
Kheng Cheng School
Naval Base Primary School
New Town Primary School
Peiying Primary School
River Valley Primary School
Rivervale Primary School
Sembawang Primary School
Temasek Primary School
Xinmin Primary School
Xishan Primary School
Yumin Primary School
Zhenghua Primary School

Cadets

Admiralty Secondary School
Ang Mo Kio Secondary School
Assumption English School
Bartley Secondary School
Bendemeer Secondary School
Broadrick Secondary School
Cedar Girls' Secondary School
Chij Secondary (Toa Payoh)
Commonwealth Secondary School
Compassvale Secondary School
Coral Secondary School
Crescent Girls' School
Dunman Secondary School
Evergreen Secondary School

Fairfield Methodist School (Secondary)
Fuhua Secondary School
Greendale Secondary School
Guangyang Secondary School
Hougang Secondary School
Hua Yi Secondary School
Jurong Secondary School
Jurong West Secondary School
Marsiling Secondary School
Nan Chiau High School
Northbrooks Secondary School
Punggol Secondary School
Queenstown Secondary School
Raffles Girls' School (Secondary)
Raffles Institution
Regent Secondary School
Seng Kang Secondary School
Serangoon Garden Secondary School
Serangoon Secondary School
Singapore Chinese Girls' School
St. Gabriel's Secondary School
St. Margaret's Secondary School
Tanjong Katong Girls' School
Victoria School
Woodgrove Secondary School
Yio Chu Kang Secondary School
Zhenghua Secondary School

Chapters

Anderson Junior College
Ite College East
Nanyang Junior College
Nanyang Polytechnic
Nanyang Technological University
National University Of Singapore
Ngee Ann Polytechnic
Raffles Institution (Junior College)
Serangoon Junior College
Singapore American School
Singapore Management University
Singapore Polytechnic
Singapore University Of Technology And Design



At Singapore Red Cross, we recognise that human capital is an organisation’s greatest asset, which is why we place strong emphasis on meaningful engagement of our staff and their well-being.

Family Day & Staff Appreciation Dinner

SRC’s annual Family Day & Staff Appreciation Dinner took place on 17 November at Red Cross Home for the Disabled. We kicked off the afternoon with an interactive exhibition - to enable family members a deeper understanding and appreciation of their loved one’s work and the Red Cross impact in Singapore and beyond. Staff from the various departments also set up game booths to engage fellow colleagues and their families in the lesser known facts of our programmes and services.

Following that, everyone was treated to dinner, alongside entertaining performances and activities; including Lip Sync Battle, Best Dressed Awards and a video screening of our everyday heroes - staff in action, filmed and produced by volunteers touched by the Red Cross.

RGHD Keep-Fit Programme

At least twice a week, Red Cross Home for the Disabled (RGHD) staff partake in various fun and engaging activities through the Keep-Fit Programme. Introduced this year, the programme aimed to create opportunities for care-staff at RGHD to bond with one another while keeping fit at the same time.

Wellness Hour

Striking a good work-life balance is an essential part of keeping employees happy and productive. At SRC, we encourage all staff members to call it a day an hour earlier every Friday and invest the time on wellness activities that enhance their physical and mental wellbeing, such as sports and team bonding sessions.

On The House

On The House (OTH) was borne out of our CEO’s vision to rally staff from different departments to work together in celebration of iconic occasions. Each year, a newly appointed OTH committee would spearhead a series of events and engage all staff for an afternoon of bonding activities, entertainment and food, in conjunction with major occasions like Chinese New Year, Hari Raya, Deepavali, etc.

Quarterly Staff Meeting

Organised by our HR department, SRC’s quarterly staff meeting serves as a formal platform for staff engagement and bonding, over light refreshments. Regular activities include management updates on important issues, welcoming of new recruits, birthday celebrations, sharing sessions, as well as a ‘Ask Sec Gen’ townhall segment where staff have the opportunity to voice concerns or raise queries.



TOUCHING HEARTS

ELDERAID

First launched at Tampines West in 2015, ElderAid is a befriending and wellness programme that mobilises and empowers community volunteers to care for and build resilience of the vulnerable, through outreach and humanitarian services. ElderAid volunteers also provide assistance and support at neighbourhood community events, bonding with the people in their neighbourhood to reduce vulnerability.

In 2016-2017, the service was extended to the South East District - Bedok and Marine Parade - to reach out to more beneficiaries.

Value impact

- **Social befriending**
- **Community outreach**
- **First response,**
- **Referrals to aid**

For 83-year-old Mdm Ngoh Wung Kheng, who lives alone in a flat in Tampines, her daily routine usually involves roaming around the neighbourhood on a bus in the day, followed by watching television at night. Thanks to ElderAid volunteers Chin Nyok Tow and Anthony Chen, who spend close to two hours socialising and listening to Mdm Ngoh's stories every other week, her life of solitude ended in 2015. Their company never fails to bring a smile to Mdm Ngoh each time, and she looks forward to their visit.



“You learn many things and get a lot of advice from the elders. Some of them really touched me with their words. I admire their fighting spirit”

Mr John Matthew, ElderAid volunteer

150 ElderAid volunteers;
23% increase from 2016

39 elderly beneficiaries have benefitted from the friendship and support of our neighbourhood-based network of volunteers.



Twice
a month
home visits by our pool of dedicated community volunteers.



Total of **1,200** hours clocked by volunteers;
30% increase from 2016



7 outings and **8** engagements organised by volunteers



Annual operating cost
\$209,000

FOODAID

Through FoodAid, Singapore Red Cross provides monthly food vouchers to the disadvantaged, enabling beneficiaries to purchase nutritious food that they do not often get to have, whilst helping to relieve some of their financial burden.

During their monthly home visits, our volunteer befrienders give supplementary support to beneficiaries, such as offering a listening ear, tutoring young children and helping the seniors with household chores.

Supporting

- **Skipped-generation families** (grandparent-headed households)
- **Single-parent families**
- **The working poor**

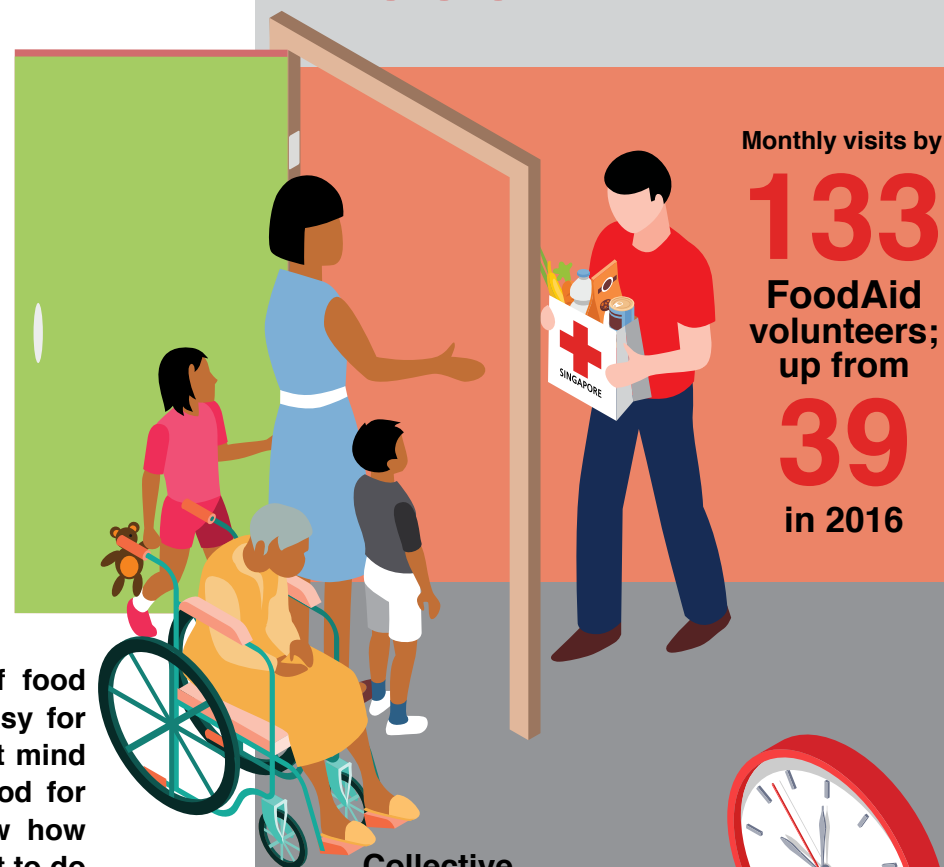
Mdm Eileen Tan Meang Hui, 44, is the sole caretaker of her 11-year-old daughter and 12-year-old son who suffers from Duchenne's Muscular Dystrophy. With the food vouchers provided by SRC, Mdm Tan is able to purchase fresh fish, meat and vegetables, which they don't get much of, for her family. Her children also anticipate visits by FoodAid volunteers as they will take time to play and chat with them.

“Without the \$250 worth of food vouchers, it is really not easy for my family to get by. I do not mind not eating but I will buy food for my children. I do not know how long (my son) will live. I want to do my best to make him happy and adequately meet his needs while he is still alive.”

Mdm Eileen Tan Meang Hui



330 beneficiaries received 'Meals with Love' in 2017



Monthly visits by

133 FoodAid volunteers; up from **39** in 2016

Collective **2,394** hours clocked by volunteers



Over \$190,000 in food vouchers every year

TRANSPORTAID

Due to limited mobility, many bed/wheelchair-bound patients face challenges when they need to get to and from their medical appointments. Singapore Red Cross' TransportAid helps the elderly and disabled from low-income homes access healthcare, such as medical treatment, dialysis, rehabilitation and day activity with door-to-door escort services. This ensures that those in need can get to life sustaining care, which they may otherwise be unable to travel to.



For 10 years, mother-daughter pair, Choo Peck See and Mdm Teo Choon Kim, have relied on SRC's TransportAid to get to their healthcare. When Peck See was 16, her mother came down with a stroke. Peck See herself was later diagnosed with kidney failure, and she lost her father when she turned 28. Today,

Mdm Teo, 69, who has diabetes and stroke, is fully dependent on Peck See, 49, as her only caregiver. Beyond providing transportation, the TransportAid responders also provide the priceless gift of friendship.

“Singapore Red Cross is known for its disaster relief, but its impact is much closer to home for us. The TransportAid service enables my mother to get to her medical appointments largely subsidised.”

Peck See



10,405 life-sustaining trips made in 2017

360 man-hours

contributed by our pool of dedicated TransportAid responders, who work quietly behind the scenes to ensure that beneficiaries get to their appointments on time.

Served by a fleet of **9** vehicles

6 Transporters

3 Non-Emergency ambulances



Enabled **522** beneficiaries to access healthcare services



Medical Chaperone & Transportation (MCT)

Pilot programme commenced in March, in partnership with Agency for Integrated Care. Under this programme, in addition to transportation, beneficiaries will be accompanied by a responder during their medical consultations.

Annual operating cost \$1,128,000

HOME+

Singapore Red Cross' Home Monitoring and Eldercare (HoME+) service aims to help seniors living on their own, through a helpline for non-emergency situations; and a monitoring, alert and response system for home safety, for community ageing-in-place.



Implemented in
July 2017



In 2017,
50 elderly
living alone
benefited from

By Singapore Red Cross
HoME+
HOME MONITORING | ELDERCARE

**Pilot
Phase**

North East and
South East districts



3 Components:

- 24/7 helpline
- Home monitoring system
- Home visits by community responders



Supported
by **50**
volunteer
responders



Annual operating cost
\$191,000

“Today, more than 47,000 seniors aged 65 and above in Singapore live alone, and this number is expected to reach 83,000 in 2030. Our fast-aging population requires more comprehensive community based health care and support services. The introduction of HoME+ complements Singapore Red Cross' existing suite of services designed to help our seniors age in place within the community.”

Sahari Ani, Director of Services, Singapore Red Cross

RED CROSS HOME FOR THE DISABLED

Established in 1952, the Red Cross Home for the Disabled (RCHD) is a residential home for adults and children with multiple disabilities, and operates a Day Activity Centre providing day care services. Supported a team of dedicated nursing professionals, therapy and healthcare aides, physiotherapists as well as occupational and speech therapists, RCHD provides quality care to those who are unable to care for themselves due to their disabilities.

A Decade of Partnership

2017 marked the 10th anniversary of The Portcullis Group's Corporate Social Responsibility to RCHD. For the last ten years, staff of The Portcullis Group have been visiting the Home monthly without fail. The Group has also been supporting RCHD through Christmas parties for the residents and caregivers, fundraising events like food bazaars, silent bids and auctions and the donation of a piano. The bonds and rapport forged with the residents are what keep them going back to reconnect with people whom they regard as family.



To mark the 10th anniversary of the CSR at the Home, The Portcullis Group organised a Charity Dinner at the Senior Police Officers' Mess on 25 November to raise funds to develop a mechanical hoist system for RCHD. Currently, it takes four caregivers to carry a resident. With the mobility support hoist system in place, only one caregiver is required to lift the resident, resulting in greater efficiency and enhanced quality of care for the residents.

Due to her physical limitations, Lam Yoke Sim was enrolled into RCHD 13 years ago in order for her to receive better quality care. Yoke Sim's sister was getting on in age and had difficulty carrying and bathing her, while her brother had to work. Despite being dependent on the caregivers for all her activities, Yoke Sim remains jovial and enjoys interacting with staff, volunteers and visitors, during activities such as musical performances, refreshing haircuts or spa time like manicures and pedicures.



“My heart told me volunteering was the right thing to do. I treat the residents as my family. They are like brothers and sisters to me.”

Red Cross volunteer, Stefan Smola, who has been has been visiting Yoke Sim and the other residents of RCHD every Sunday with his wife, daughter and son-in-law for the last nine years.

Animal Assisted Activities

Introduced by SOSD Healing Paws, animal-assisted activities were introduced to residents in March 2017. Volunteers from Healing Paws visit RCHD every last Saturday of the month, and residents were encouraged to pat and feed the dogs. These visits brought immense delight to our residents, improving their quality of life.



Provided long term
residential care to

92 residents



Served **12**
clients in Day
Activity Centre

Special Olympic Games

25 residents engaged in games, such as wheelchair racing and target shooting, as part of an initiative led by volunteers from Every Nation Church.



Purple Parade 2017

RCHD took part in Purple Parade for the second year running on 28 Oct 2017, together with 50 other contingents. 25 care staff and volunteers and 3 residents from RCHD participated in the event.



Annual operating cost
\$3,390,000

SAVING LIVES



BLOOD DONOR RECRUITMENT PROGRAMME

Singapore Red Cross was appointed the National Blood Donor Recruiter in 2001. Together with our partner-in-service, the Health Sciences Authority, we recruit and retain blood donors towards meeting the national blood transfusion needs. In 2017, we:

- Recruited **73,107** whole blood donors
- Collected **116,128** units of whole blood
- Organised **471** community blood drives



Highlights:

- Halloween-themed blood drive, organised by Singapore Red Cross youth volunteers (71 units of blood collected)
- "Magical Christmas" blood donation drive run by student leaders from CHIJ St Theresa's Convent (75 units of blood collected)
- "Drops of Life" blood donation drive in collaboration with LoveSingapore (450 units of blood collected)

New initiatives

- Information kits targeted at first-time donors and deferred donors
- Quarterly e-digests for donors, bloodmobile organisers, and volunteers

Missing Type Campaign 2017

Missing Type campaign made its return from 4-9 July. Government agencies and private companies were encouraged to remove the blood type letters A,B,O from their physical signages and digital brand to raise awareness on the importance of blood donation. A total of 79 organisations, including BreadTalk IHQ, Carousell and The Soup Spoon, participated in the campaign.



Organised **177** community outreach, education, and engagement events



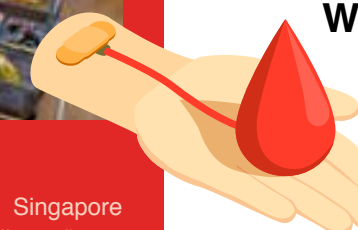
1.8% Marketing Campaign

Launched a refreshed campaign to highlight the fact that only 1.8% of Singapore donates blood. Aimed at donors aged 20-30, the campaign featured 3 icons - a bicycle, sneakers and a teddy bear - targeted at different audience segments through various digital media platforms.



World Blood Donor Day 2017 (10 June)

Celebration of the annual World Blood Donor Day with a Champion Recognition Ceremony and carnival at Singapore Sports Hub.



1,252 blood donors

and **32** blood mobile organisers received accolades for their milestone donations and ongoing support to the National Blood Programme.

Blood donation educational

Launched new blood-donation-themed skit 'It Takes All Types' to secondary school students in February. The skit was performed to nearly

13,000 students

from 14 secondary schools.



Volunteer engagement



Concluded training of **10** volunteer docents to conduct regular educational tours of our blood banks to students and external groups. Collectively, they gave more than

20 tours in 2017.

SINGAPORE RED CROSS ACADEMY

The Singapore Red Cross Academy (SRCA) offers a wide range of standard and specialised First Aid courses to the community, to empower them to respond to emergencies, at home and abroad. Starting out as a training centre for first aid courses, SRCA has since evolved to be a leading training and resource hub for humanitarian education, with its curriculum covering:

- First aid & life support courses
- Emergency & Disaster Management
- Humanitarian Education
- Psychosocial Support
- Youth Development
- Continuing Professional Development

“Being equipped with first aid skills is an important element in the safeguarding of our community and our country. The humanitarian landscape is fast changing; and we are also faced with ever-increasing, more severe, and more complex disasters. By offering a broader curriculum that covers more in-depth aspects of humanitarian work and its intricacies, we hope participants can gain a better understanding of the factors that influence the progress and development of vulnerable communities and countries. Hopefully, the community will also become more socially conscious, and sensitive of the environment.”

Faiszah Bte Abdul Hamid,
Head of Singapore
Red Cross Academy



711
first aid
courses

73 first aid awareness talks and
demonstrations, reaching out to
1,101 participants

10,710
people trained
in first aid



Became an **approved
Instructor
Training Center**
for Basic Life Support Courses

SRCA's first aid instructor course
‘Train the Trainer’
was made available to members
of the public.

Partnership with Singapore Polytechnic

SRCA signed a two-year Memorandum of Understanding (MoU) with Singapore Polytechnic (SP) and jointly launched the Diploma-Plus Certificate Programme in Humanitarian Affairs in October. The first intake attracted 120 applications and saw the enrolment of 32 students.



Youth Leadership Humanitarian Camp



Designed to develop the capabilities of youth and nurture them to become humanitarian leaders, YLHC was extended to a three day programme in 2017 to provide participants with a more comprehensive learning experience. The camp was also offered to youths from abroad - Dalian International School - for the first time.

COMMUNITY FIRST AID

Through Community First Aid, we mobilise First Aid volunteer teams for first aid coverage at national and community events, as well as equip volunteers with first aid skills as part of our mission to protect lives and respond to emergencies.

Emergency preparedness

In an emergency, the first few minutes are critical to saving a person's life. When an accident occurs, be it at home or in public, only about 15% receive any form of public bystander assistance. More trained first aiders within the community ensures that timely first aid can be rendered to family or those in their neighbourhoods before help arrives, thereby reducing vulnerability and enhancing community resilience.

“Providing immediate relief to people who are injured is one of the most meaningful ways you can spend your time. It may seem daunting at first, but the experienced volunteers here are always willing to share their knowledge. At the end of the day, you can walk away knowing you have made a difference in others' lives.”

Rachel Lim, First Aider on Wheels volunteer



500
casualties
received first aid

300
volunteers

deployed under FAOW and
across a variety of events



11,000 hours
of first aid coverage within the community

Supported more than **100** national,
major and community events, including
Chingay and National Day Parade



First Aider on Wheels

First initiated at East Coast Park in 2012 and subsequently Pulau Ubin in 2016, FAOW operations were expanded to Sentosa in March 2017. Under the programme, volunteers patrol along the designated area on bicycles on weekends and public holiday, to provide first aid to those in need.



BRIDGING COMMUNITIES



COMMUNITY ENGAGEMENT

Donors and supporters form the backbone of the work we do at SRC. Throughout the year, we actively engage, educate, excite and empower members of the public, through a variety of platforms and channels.

Outreach and Advocacy

InstaSave

On the occasion of World First Aid Day (9 September), we launched InstaSave - a collection of six bite-sized instructional first aid videos hosted on SRC's Instagram. Developed in partnership with local advertising agency DDB Group Singapore, InstaSave was developed with the aim to make first aid more accessible to all in the community, starting with the youth and those on-the-go. Each video addresses one of the six common conditions of emergencies in Singapore - cardiac arrest, seizure, choking, severe bleeding, stroke, and burn wounds.

Partnerships for Humanity - Rebuilding in Nepal

In conjunction with the 2nd Anniversary of the Nepal Earthquake, we hosted an exhibition on 4 May to showcase the results of our rebuilding efforts in Nepal. The exhibition, entitled Partnerships for Humanity - Rebuilding in Nepal, was held in Kathmandu and featured the projects of 15 SRC partners that contributed to Nepal's road to recovery. These projects go beyond the usual infrastructural projects that restores essential services such as healthcare and education, but also included long-term programmes like art therapy for families of prisoners and training for local volunteers, thereby ensuring sustainability and lasting impact in the communities we serve. Senior Minister of State, Ministry of Defence and Ministry of Foreign Affairs, Dr Maliki Osman graced the event as the guest of honour.



Red Cross on Campus

General Paper Outreach

For the second year running, we collaborated with the Ministry of Education on their General Paper (GP) Outreach Programme to deliver a series of talks to participating schools, in relation to current affairs topics. This year, SRC visited students from Dunman High School and Millennia Institute and engaged them on the topic of Community Resilience. The talks received good feedback from students and teachers alike.

First Aid Skits

SRC brought first aid learning into schools through our signature advocacy programme. In collaboration with 3M (Singapore), we presented a series of 20 skits which educated 17,300 school-going children on the importance of first aid and emergency preparedness. The 45-minute interactive skit, titled Bandage Brothers, highlights the contents of a first aid kit, and debunks myths with regards to caring for common injuries. SRC will bring the skits back in 2018, with revamped content.

Media and Publicity

In addition to our ongoing community outreach activities, we keep the public and our stakeholders abreast of our work and developments through news media and our social media platforms. Our stories were featured in the form of beneficiary profiles, trend reports, educational articles, opinion pieces, talk shows and news, across broadcast, print and online media.

\$4,236,273 in media value

438 news reports across

63 media outlets

We also publish quarterly magazines and monthly e-news, bringing the latest developments and feature stories to partners, donors and volunteers.

On the digital front, we ramped up efforts to engage supporters on social media by developing and curating eye catching and shareable posts that covers a myriad of content, from lifestyle-centric educational pieces like first aid tips and recipes for iron-rich foods, to tales of resilience featuring beneficiaries' stories and inspirational stories showcasing volunteers' dedication. We also ran themed contests in conjunction with major occasions and continually kept followers up-to-date on Red Cross news and activities.

Our ongoing engagement resulted in robust growth in our followers base across different social media platforms.



79,705

Facebook fans;
7% increase from 2016



3,064

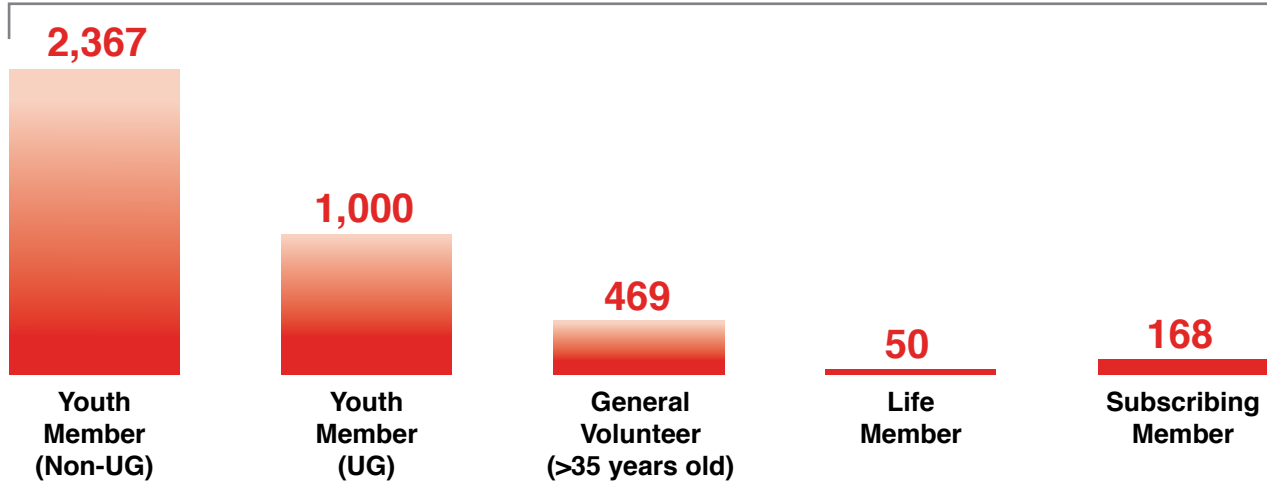
Instagram followers;
45% increase from 2016



VOLUNTEER ENGAGEMENT

SRC's Membership and Volunteer department (MVD) mobilises and facilitates individuals' and organisations' contributions to our humanitarian causes - be it time, talent, blood, or money.

4,054 New Members onboard;
19% increase from 2016



1,216 volunteers trained;
138% increase from 2016

In July 2017, MVD introduced a 3-hours training curriculum for new volunteers that also included weeknight and weekend class options. With that, we were able to speed up the training progress. New volunteers are now able to attend training in the same month when they register to be affiliated with SRC.

Corporate Volunteers

MVD also works closely with Corporate Volunteering Groups (CVG) within organisations to engage their employees in various social and community engagement activities with SRC's beneficiaries.

- Gained 42 new touch-points.
- Total base (matched): 128 CVGs

Specialised training

Adding value to our members' SRC journey, MVD occasionally organises additional training sessions for volunteers on a needs-basis.

- Developed a 1-hr call center training (8 tips on phone etiquette) for 33 volunteers at Visa Singapore. The class was also extended to staff member and key volunteers as they prepare for SRC's HoME+ programme.
- Ran a Project Management Training for 36 SRC Volunteer Events Managers at Goldman Sachs

Members Conversation 2017

Following positive response to the first Members Conversation last year, MVD organised a second edition on 20 August to further enhance the volunteering experience of our members. We engaged volunteers in a thematic discussion on Responsible Volunteering, and sought their opinions on other topics such as cross-department sharing.

SRC Awards - Honouring volunteers and staff

At the **5th Singapore Red Cross Awards**, held on 25 July, our patron **President Tony Tan Keng Yam** and SRC Chairman Tee Tua Ba presented awards to 28 individuals and 8 organisations, in honour of their dedicated humanitarian service. This year, a record 8 organisations received the 'Friend of SRC' award.



President Tony Tan Keng Yam also interacted with volunteers and partners at an exhibition of their recent humanitarian efforts. Award recipients' volunteering commitment ranges from programme-involvement to mentorship, advocacy and skills-based volunteerism.



The Body Shop's involvement with SRC first started with a CSR project at the Red Cross Home for the Disabled that involved resident-feeding assistance and ward decoration. It subsequently grew to a three-year programme that culminated in the ever-popular pampering wellness treats with their in-house skincare products, to appreciate the nursing aides for their efforts.



Six youth leaders aged 15 to 35 received the SRC President's Youth Award. They were selected from over 800 Red Cross Youth cadets and mentors based on wide-ranging criteria that included leadership qualities, global perspectives, excellence in academics and service to RCY.



Actor, Author and Producer **Edmund Chen** was amongst three Outstanding Service Award recipients - the highest honour in this year's ceremony. In his nearly three decades in the media and entertainment industry, Edmund has served as the SRC's celebrity ambassador for the past eight years. He has helped raise funds, spread awareness of the importance of blood donation, and rally goodwill towards Project R.I.C.E.



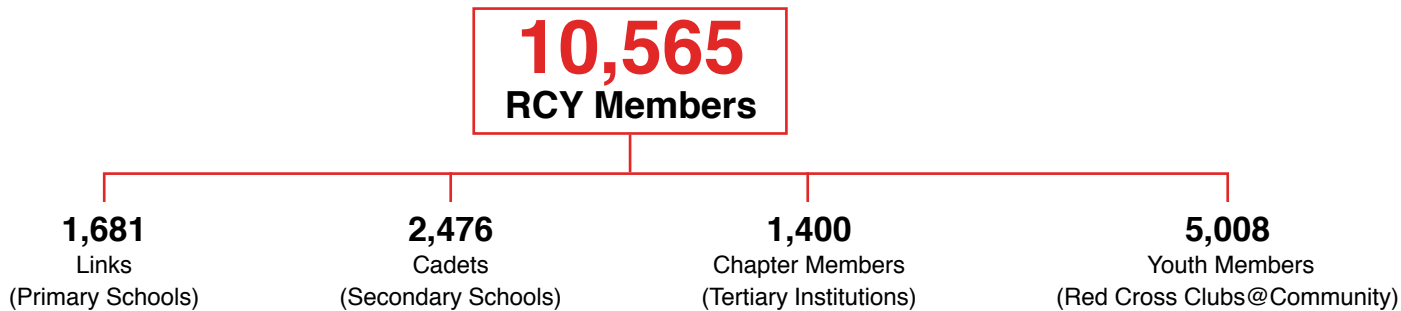
"Skills-based volunteering has become more prevalent in Singapore over the last five years. At the Singapore Red Cross, we are seeing more individuals and corporate groups volunteering their skills, usually in areas related to their professional life, to support our staff and beneficiaries."

Angeline Yong,
Head of Membership Volunteer Department



RED CROSS YOUTH

The Red Cross Youth (RCY) Movement engages youth in training and opportunities for humanitarian work in Singapore and overseas. Starting off as a uniformed group in primary and secondary schools, RCY Singapore has now grown to include post-secondary institutions and communities, offering youth volunteers a seamless transition as they progress from student life into adulthood.



Annually, RCY organises a variety of programmes and activities to nurture compassionate leaders for humanity.

Units Curriculum

'School Safety' was chosen as the focus area for the RCY Units curriculum in 2017. Through this initiative, youth in schools learnt about disaster management, empowering them with the knowledge and confidence to lead risk reduction and resilience campaigns in their schools and in the wider communities.

Singapore Humanitarian Youth Summit

To further promote youth volunteering, RCY hosted the inaugural Singapore Humanitarian Youth Summit (SHYS) on 1-2 July. Featuring a series of lectures presented by a panel of invited speakers, the summit offered a platform to engage and educate youth participants on pressing humanitarian issues such as Migration, Elderly Inclusion, Voluntary Blood Donation and Community Cohesion and Security. The Summit also fostered further discussion on how sustainable action can be undertaken to address common humanitarian causes and needs.



Halloween Blood Drive

RCY's Blood Donation Workgroup conceptualised and ran a year-long campaign that aimed to encourage youth donors to plan and pledge their regular blood donation schedule. Their efforts culminated at the thematic Halloween blood drive, held on 28 October, where out of 96 registered donors, 71 were able to donate blood successfully. RCY also roped in social influencers, including Silver Ang, Shenty and Benjamin Kheng to rally supporters to the drive.



Project R.I.C.E+

In 2017, Project R.I.C.E.+ received public pledges amounting to over 16,000 hamper sets, containing food and other household essentials. More than 9,000 individuals (2,500 households) over 28 Family Service Centres benefited from this meaningful initiative.

"My experience as a volunteer of Project R.I.C.E+ 17 has been meaningful and fulfilling; not only do I get to help the less fortunate in Singapore, I have also learnt valuable life lessons."

Au Ding Ying, Deputy Project Director,
Project R.I.C.E+ 17



INTERNATIONAL HUMANITARIAN RESPONSE

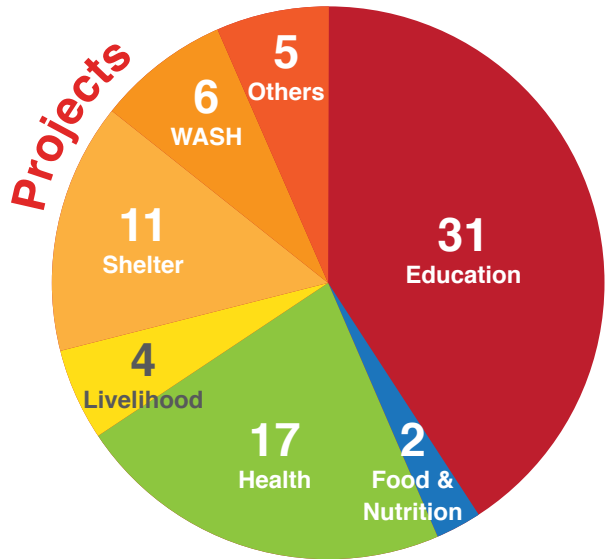
Singapore Red Cross is the largest humanitarian organisation in Singapore, providing disasters related services worldwide, with particular focus on Asia Pacific countries.

Working closely alongside partners across the Red Cross Red Crescent Movement, our international work revolves around relief, recovery, rebuilding and resiliency efforts for disaster stricken areas.

Ongoing recovery projects

Countries supported: China, Indonesia, Japan, Malaysia, Myanmar, Nepal, Sri Lanka, The Philippines, Vanuatu, Vietnam.

- Close to **300,000** beneficiaries.
- **100, 000** First aid kits distributed.



Education & Training

Volunteers Trained in 2017

	(Total)	(Youth)
Emergency Water, Sanitation and Hygiene Promotion	16	7
Overseas Disaster Deployment Training	35	20
Preparatory Course for Deployment Personnel	30	16
Knowledge Of Water Safety and Performing Land-Based Rescue	6	3

Water, Sanitation and Hygiene (WASH) Practical Training in Bandung, Indonesia
15 volunteers participated in a practical training in Bandung, Indonesia that includes emergency water, sanitation and hygiene promotion topics.

2nd Overseas Disaster Deployment Training: 44 volunteers trained

IFRC Emergency Health Working Group (21-25 June)

On 21-25 June, SRC hosted the Global Emergency Health Working Group, with a total of 55 participants from Europe, Americas and Asia Pacific Region from the Movement.

Singapore Red Cross Humanitarian Workshop (27 July)

25 participants from SEA RCRC attended the workshop, hosted and organised by IFRC, ICRC and Singapore Red Cross.

Basic Lifesaving (27 August)

8 staff and volunteers participated in the basic lifesaving course hosted at ECP, learning about basic rescue abilities in open water conditions.

SRC Humanitarian Conference: Green Initiatives & Sustainability in Humanitarian Response (28 Oct)

SRC hosted the 3rd Humanitarian Conference at Fort Canning Lodge this year, which saw a sizeable turnout of 150 participants. Based on the theme 'Green Initiatives and Sustainability in Humanitarian Responses', the conference covered issues on environmental protection and sustainability, and shed valuable insights into how environmental concerns should start and be worked into long term humanitarian assistance.

Disaster relief



Aceh Earthquake

Working with the Indonesian Red Cross (PMI), we **deployed SRC volunteer health professionals to Aceh**, Indonesia, to support local health professionals and volunteers with a capacity building programme for physiotherapy care. This initiative was an expansion of SRC's ongoing project to build capacity for mass casualty management in Aceh.

Africa Drought Relief

Contributed **\$85,500** in relief funds to Kenya, Ethiopia, and Somalia (**\$28,500** each)

Cyclone Mora

Contributed **USD150,000** towards Myanmar, Sri Lanka and Bangladesh.
Dispatched 2 disaster response teams - one to Sri Lanka and Myanmar

Humanitarian Mission to Marawi, Philippines

Contributed **3 water filters** and **deployed 2 members** to support the people affected in conflicted areas in Marawi Philippines. This mission is a collaboration between SRC and SAF.

Humanitarian Mission to Cox Bazar, Bangladesh

Deployed a disaster response team to Bangladesh to aid with the conflict situation. Together with the IFRC and Turkish Red Crescent, food items were distributed to the communities in the refugee camps.

Disaster Response in Vietnam, Typhoon Damrey

Deployed a disaster response team to support the Vietnam Red Cross in providing aid to the areas affected by Typhoon Damrey

Overseas Humanitarian Projects



Myanmar (September) - Deployed a team in September to conduct health screening and awareness programme on prevention and risk of diabetes, hypertension to the midwives, school teachers and the villagers.

Nepal (November) - Organised an overseas humanitarian project In November, in collaboration with Awful Grace. The team conducted health and dental screening in Chitwan, Pokhara and Kathmandu, and also distributed prescription medicine and dental supplies to the community.

Vietnam (December) - Red Cross Youth embarked on an Overseas Humanitarian Program at Lam Vy Elementary Main School, Thai Nguyen Province, Vietnam from 10 - 23 Dec 2017. The youth engaged students in Basic English and Personal Hygiene lessons. They also refurbished the school library and conducted workshop on Volunteerism with youth of Thai Nguyen Red Cross Chapter.

PARTNERSHIPS & FUNDRAISING

With the generosity and continuous support from donors and partners, SRC raised a total of **\$4,192,100** in 2017. These funds are key to the success and sustainability of all our local humanitarian services, helping to uplift and make a positive difference to the lives of the vulnerable within our community.

Significant Events in 2017

Charity Draw 2017

Initiated in partnership with Singapore Pools, the Singapore Red Cross Charity Draw was very well received and brought in **\$75,418** over a period of three months. The grand draw was held at the Red Cross House on 4 August.

International Bazaar

Hundreds of representatives from diplomatic missions, local and international enterprises, schools, and volunteers banded together for humanity at SRC's International Bazaar on 23 September 2017. **\$42,705** was raised through the iconic bazaar, which featured more than 50 stalls that showcased an array of food, beverages, products offerings from all over the world. The event was graced by Mrs Josephine Teo, Minister, Prime Minister's Office and Second Minister for Home Affairs & Manpower as the Guest-of-Honour.



SRC - RHT Rajan Menon Foundation Charity Golf 2017

Sponsored by the SRC - RHT Rajan Menon Foundation, the annual SRC's Charity Golf at the Orchid Country Club took place on 17 October 2017. With support from 144 avid golfers and a dedicated committee, the widely-anticipated tournament brought in **\$120,737**.



Charity Concert 2017

"Passage of Life" was inspired by our local Straits culture and featured the vibrant Peranakan culture and cuisine. Held on 16 December 2017 at Gateway Theatre, the concert was supported by Dance Ensemble Singapore, and featured personalities such as Jack Ye Zheng Wen, Jiu Jian, Terene Seow and Tallin Ang. Member of Parliament for Tanjong Pagar GRC, Dr Chia Shi-Lu graced the event as Guest-of-Honour. Through the sale of tickets and cash donations, SRC raised **\$100,967**.

ChariTrees 2017

With the aim of promoting inclusivity and spreading joy to the disadvantaged in the community during the festive season of December, SRC presented the annual ChariTrees @ Marina Bay Promenade. Organised in partnership with ComChest, this festive fundraiser collected **\$27,000**.



Flag Day 2017

One of SRC's signature fundraising events, Flag Day 2017 raised a total of **\$182,682**. More than 3,000 individuals from all walks of life came together to help, through pledge cards, street collections and third-party campaigns.



RCHD Portcullis Dinner

To mark the **10th anniversary** of its adoption of Red Cross Home for the Disabled (RCHD), The Portcullis Group organised a charity dinner on 25 November 2017. **\$271,627** was raised through the dinner, which will contribute towards the implementation of a new ceiling lift system (Hoist) for the Home.



SHOP@REDCROSS

The ever-popular Shop@RedCross, with two stores located in Jalan Khairuddin and Red Cross House, raised a collective sum of **\$261,076** in 2017. Run by a pool of dedicated and selfless volunteers, the team toils tirelessly every week to bring the best selection of pre-loved and new goods to the masses at low cost, all for a great cause.

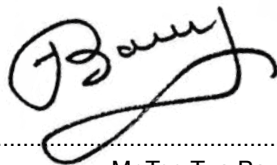


FINANCIAL STATEMENTS

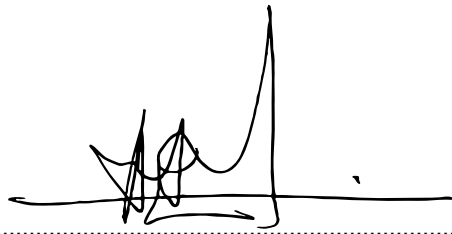
In the opinion of the Council,

- (a) the financial statements set out on pages 5 to 35 are drawn up in accordance with the provision of the Singapore Charities Act, Chapter 37, (the "Charities Act") and Singapore Financial Reporting Standards in Singapore so as to give a true and fair view of the financial position of Singapore Red Cross Society (the "Society") as at 31 December 2017 and the financial activities and other comprehensive income, changes in funds and reserves and cash flows of the Society for the financial year then ended;
- (b) at the date of this statement, there are reasonable grounds to believe that the Society will be able to pay its debts when they fall due;
- (c) the accounting and other records required by the Charities Act to be kept by the Society have been properly kept in accordance with the provisions of the Charities Act;
- (d) the use of donation moneys is in accordance with the objectives of the Society as required under regulation 11 of the Charities (Institutions of a Public Character) Regulations; and
- (e) the Society has complied with regulation 15 (Fund-raising expenses) of the Charities (Institutions of a Public Character) Regulations.

ON BEHALF OF THE COUNCIL



Mr Tee Tua Ba
Chairman



Mr Tan Kai Hoe
Chairman, Finance and Investment Committee

24 May 2018

Report on the Audit of the Financial Statements

Opinion

We have audited the accompanying financial statements of Singapore Red Cross Society (the "Society"), which comprise the statement of financial position as at 31 December 2017, and the statement of financial activities and other comprehensive income, statement of changes in funds and reserves, and statement of cash flows for the year then ended, and notes to the financial statements, including a summary of significant accounting policies, as set out on pages 5 to 35.

In our opinion, the accompanying financial statements of the Society are properly drawn up in accordance with the provisions of the Singapore Charities Act, Chapter 37 (the "Charities Act") and Financial Reporting Standards in Singapore ("FRSs") so as to give a true and fair view of the financial position of the Society as at 31 December 2017, and of the financial performance, statement of changes in funds and reserves, and statement of cash flows of the Society for the year ended on that date.

Basis for Opinion

We conducted our audit in accordance with Singapore Standards on Auditing ("SSAs"). Our responsibilities under those standards are further described in the *Auditor's Responsibilities for the Audit of the Financial Statements* section of our report. We are independent of the Society in accordance with the Accounting and Corporate Regulatory Authority ("ACRA") *Code of Professional Conduct and Ethics for Public Accountants and Accounting Entities* ("ACRA Code") together with the ethical requirements that are relevant to our audit of the financial statements in Singapore, and we have fulfilled our other ethical responsibilities in accordance with these requirements and the ACRA Code. We believe that the audit evidence we have obtained is sufficient and appropriate to provide a basis for our opinion.

Information Other than the Financial Statements and Auditor's Report Thereon

Management is responsible for the other information. The other information comprises the information included in the annual report, but does not include the financial statements and our auditor's report thereon.

Our opinion on the financial statements does not cover the other information and we do not express any form of assurance conclusion thereon.

In connection with our audit of the financial statements, our responsibility is to read the other information and, in doing so, consider whether the other information is materially inconsistent with the financial statements or our knowledge obtained in the audit or otherwise appears to be materially misstated. If, based on the work we have performed, we conclude that there is a material misstatement of this other information, we are required to report that fact. We have nothing to report in this regard.

Responsibilities of Management for the Financial Statements

Management is responsible for the preparation of financial statements that give a true and fair view in accordance with the provisions of the Charities Act and FRSs, and for devising and maintaining a system of internal accounting controls sufficient to provide a reasonable assurance that assets are safeguarded against loss from unauthorised use or disposition; and transactions are properly authorised and that they are recorded as necessary to permit the preparation of true and fair financial statements and to maintain accountability of assets.

In preparing the financial statements, management is responsible for assessing the Society's ability to continue as a going concern, disclosing, as applicable, matters related to going concern and using the going concern basis of accounting unless management either intends to liquidate the Society or to cease operations, or has no realistic alternative but to do so.

The Council's responsibilities include overseeing the Society's financial reporting process

Auditor's Responsibilities for the Audit of the Financial Statements

Our objectives are to obtain reasonable assurance about whether the financial statements as a whole are free from material misstatement, whether due to fraud or error, and to issue an auditor's report that includes our opinion. Reasonable assurance is a high level of assurance, but is not a guarantee that an audit conducted in accordance with SSAs will always detect a material misstatement when it exists. Misstatements can arise from fraud or error and are considered material if, individually or in the aggregate, they could reasonably be expected to influence the economic decisions of users taken on the basis of these financial statements.

As part of an audit in accordance with SSAs, we exercise professional judgement and maintain professional scepticism throughout the audit. We also:

- (a) Identify and assess the risks of material misstatement of the financial statements, whether due to fraud or error, design and perform audit procedures responsive to those risks, and obtain audit evidence that is sufficient and appropriate to provide a basis for our opinion. The risk of not detecting a material misstatement resulting from fraud is higher than for one resulting from error, as fraud may involve collusion, forgery, intentional omissions, misrepresentations, or the override of internal control.
- (b) Obtain an understanding of internal control relevant to the audit in order to design audit procedures that are appropriate in the circumstances, but not for the purpose of expressing an opinion on the effectiveness of the Society's internal control.
- (c) Evaluate the appropriateness of accounting policies used and the reasonableness of accounting estimates and related disclosures made by management.
- (d) Conclude on the appropriateness of management's use of the going concern basis of accounting and, based on the audit evidence obtained, whether a material uncertainty exists related to events or conditions that may cast significant doubt on the Society's ability to continue as a going concern. If we conclude that a material uncertainty exists, we are required to draw attention in our auditor's report to the related disclosures in the financial statements or, if such disclosures are inadequate, to modify our opinion. Our conclusions are based on the audit evidence obtained up to the date of our auditor's report. However, future events or conditions may cause the Society to cease to continue as a going concern.
- (e) Evaluate the overall presentation, structure and content of the financial statements, including the disclosures, and whether the financial statements represent the underlying transactions and events in a manner that achieves fair presentation.

We communicate with the Council members regarding, among other matters, the planned scope and timing of the audit and significant audit findings, including any significant deficiencies in internal control that we identify during our audit.

Report on Other Legal and Regulatory Requirements

In our opinion, the accounting and other records required by the Charities Act to be kept by the Society have been properly kept in accordance with the provisions of the Charities Act.

During the course of our audit, nothing has come to our attention that causes us to believe that during the year:

- (a) the use of the donation moneys was not in accordance with the objectives of the Society as required under Regulation 11 of the Charities (Institutions of a Public Character) Regulations; and
- (b) the Society has not complied with the requirements of Regulation 15 (fund-raising expenses) of the Charities (Institutions of a Public Character) Regulations

Deloitte + Touche LLP

Public Accountants and
Chartered Accountants
Singapore

24 May 2018

STATEMENT OF FINANCIAL POSITION

31 DECEMBER 2017

	Note	2017 \$	2016 \$
ASSETS			
Current assets			
Cash and cash equivalents	6	6,010,536	8,510,073
Other receivable, deposits and prepayments	7	1,873,496	1,006,578
Donated supplies	8	1,800,000	-
Total current assets		9,684,032	9,516,651
Non-current assets			
Property, plant and equipment	9	3,129,600	3,016,353
Available-for-sale investments	10	5,512,890	5,664,253
Total non-current assets		8,642,490	8,680,606
Total assets		18,326,522	18,197,257
LIABILITIES, FUNDS AND RESERVES			
Current liability			
Other payables and accruals	11	2,880,279	3,211,979
Non-current liability			
Deferred capital grants	12	832,195	637,429
Funds and reserves			
Unrestricted funds		14,482,108	13,874,807
Restricted funds	13	-	436,439
Investment revaluation reserve	10	131,940	36,603
Total funds and reserves		14,614,048	14,347,849
Total liability, funds and reserves		18,326,522	18,197,257
Net assets of:			
International Relief Funds, held on behalf and managed by Singapore Red Cross Society	14	26,079,064	32,342,703

See accompanying notes to financial statements.

STATEMENT OF FINANCIAL ACTIVITIES

AND OTHER COMPREHENSIVE INCOME

YEAR ENDED 31 DECEMBER 2017

	Note	2017 \$	2016 \$
Income			
Voluntary income:			
General donations		2,696,880	1,012,134
Donations (Home for the Disabled)		136,270	109,990
Donations (Transport Aid)		10,210	10,216
Membership subscriptions		22,103	29,673
Fundraising events		1,548,740	1,298,204
Investment and interest income		221,131	331,574
		4,635,334	2,791,791
Charitable activities			
Training Academy fees		1,656,924	1,216,421
Community Service – Transport Aid			
Programme fees		59,117	89,409
Funding from Tote Board		198,307	192,629
Blood Donor Recruitment Programme funding from			
Health Science Authority		2,355,625	2,477,764
Home for the Disabled:			
Residents' contribution		16,003	19,663
Grants from Ministry of Social and Family Development, National Council of Social Services and SG Enable		2,669,954	2,732,435
Deferred capital grant		-	30,951
Grant from Community Silver Trust		133,378	80,435
Grant from National Youth Council		9,000	-
Government grants:			
Ministry of Education		301,061	234,365
National Council of Social Services		-	8,349
Grant from National Youth Council		9,000	-
Care and Share Fund		403,035	75,816
		7,802,404	7,158,237
Other Income			
Programme Support Recovery	17	127,828	108,827
Miscellaneous	18	514,536	564,212
Total income		13,080,102	10,623,067

See accompanying notes to financial statements.

**STATEMENT OF FINANCIAL ACTIVITIES
AND OTHER COMPREHENSIVE INCOME (CONT'D)
YEAR ENDED 31 DECEMBER 2017**

	Note	2017 \$	2016 \$
Operating expenditure			
Fundraising costs	19	(1,131,091)	(723,502)
Charitable activities			
Training Academy		(1,614,187)	(1,603,226)
Community Service – Transport Aid		(1,128,282)	(865,800)
Blood Donor Recruitment Programme		(2,262,094)	(2,398,544)
Home for the Disabled		(3,392,203)	(3,230,829)
Services and disaster management		(1,375,382)	(1,176,852)
International Services		(659,340)	(736,874)
Red Cross Youth		(788,780)	(646,710)
		(11,220,268)	(10,658,835)
Contribution to the International Federation of Red Cross and Red Cross Crescent Societies		(205,255)	(204,909)
GST paid for prior financial years	15	(352,626)	-
Loss on disposal of investment		-	(19,750)
Total operating expenditure		(12,909,240)	(11,606,996)
Surplus (Deficit) for the year	20	170,862	(983,929)
Other comprehensive income (loss):			
<i>Items that are reclassified subsequently to profit or loss:</i>			
Change in fair value of available-for-sale investments		98,562	59,958
Fair value of available-for-sale investments reclassified to profit or loss upon disposal		(3,225)	(19,750)
Other comprehensive income for the year		95,337	40,208
Total comprehensive income (loss) for the year		266,199	(943,721)

See accompanying notes to financial statements.

**STATEMENT OF CHANGES IN FUNDS
AND RESERVES
YEAR ENDED 31 DECEMBER 2017**

	Unrestricted funds \$	Restricted funds \$ (Note 13)	Investment revaluation reserve \$	Total \$
Balance at 1 January 2016	14,562,412	732,763	(3,605)	15,291,570
Total comprehensive income (loss) for the year:				
Deficit for the year	(153,028)	(830,901)	-	(983,929)
Other comprehensive income for the year	-	-	40,208	40,208
Transfer from restricted funds to unrestricted fund	42,060	(42,060)	-	-
Transfer from unrestricted fund to restricted funds	(576,637)	576,637	-	-
Total	(687,605)	(296,324)	40,208	(943,721)
Balance at 31 December 2016	13,874,807	436,439	36,603	14,347,849
Total comprehensive income (loss) for the year:				
Surplus (Deficit) for the year	1,466,526	(1,295,664)	-	170,862
Other comprehensive income for the year	-	-	95,337	95,337
Transfer from restricted funds to unrestricted fund	15,115	(15,115)	-	-
Transfer from unrestricted fund to restricted funds	(874,340)	874,340	-	-
Total	607,301	(436,439)	95,337	266,199
Balance at 31 December 2017	14,482,108	-	131,940	14,614,048

See accompanying notes to financial statements.

STATEMENT OF CASH FLOWS

31 DECEMBER 2017

NOTES TO FINANCIAL STATEMENTS

31 DECEMBER 2017

	2017	2016
	\$	\$
Operating activities		
Surplus (Deficit) for the year	170,862	(983,929)
Adjustments for:		
Depreciation of property, plant and equipment	524,516	429,583
Government grants	(6,070,360)	(5,832,744)
Dividend income	(209,547)	(222,840)
Interest income	(8,284)	(108,734)
(Gain) Loss on disposal of investment	(3,300)	19,750
Operating cash flows before movements in working capital	(5,596,113)	(6,698,914)
Donated supplies	(1,800,000)	-
Other receivables, deposits and prepayments	221,365	(26,595)
Other payables and accruals	402,691	(13,119)
Net cash used in operating activities	(6,772,057)	(6,738,628)
Investing activities		
Proceeds from disposal of available-for-sale investments	250,000	500,000
Dividends received	323,457	233,447
Interest received	38,052	56,175
Purchase of property, plant and equipment	(637,763)	(2,554,791)
Net cash flows used in investing activities	(26,254)	(1,765,169)
Financing activity		
Government grants received, representing cash from financing activity	4,298,774	6,462,272
Net decrease in cash and cash equivalents	(2,499,537)	(2,041,525)
Cash and cash equivalents at beginning of year	8,510,073	10,551,598
Cash and cash equivalents at end of year (Note 6)	6,010,536	8,510,073

See accompanying notes to financial statements.

1 GENERAL

The Society (Unique Entity Number S86CC0370E) is registered in the Republic of Singapore with its principal place of operation and registered office at 15 Penang Lane, Red Cross House, Singapore 238486.

The principal objectives of the Society are to provide assistance in relief operations in times of disaster and auxiliary health and welfare services to the sick, the handicapped, the aged and the poor without any distinction on grounds of race, nationality, religion or political opinions, and to furnish voluntary aid to the sick and wounded in times of war and to non-belligerents, prisoners of war and civilian sufferers from the effects of war.

The financial statements of the Society for the year ended 31 December 2017 were authorised for issue by the Board of Council Members on 24 May 2018.

2 SUMMARY OF SIGNIFICANT ACCOUNTING POLICIES

BASIS OF ACCOUNTING - The financial statements have been prepared in accordance with the historical cost basis, except as disclosed in the accounting policies below, and are drawn up in accordance with the provisions of the Singapore Charities Act, Chapter 37 and Financial Reporting Standards in Singapore ("FRSs").

Historical cost is generally based on the fair value of the consideration given in exchange for goods and services.

Fair value is the price that would be received to sell an asset or paid to transfer a liability in an orderly transaction between market participants at the measurement date, regardless of whether that price is directly observable or estimated using another valuation technique. In estimating the fair value of an asset or a liability, the Society takes into account the characteristics of the asset or liability which market participants would take into account when pricing the asset or liability at the measurement date. Fair value for measurement and/or disclosure purposes in these financial statements is determined on such a basis, except for share-based payment transactions that are within the scope of FRS 102 *Share-based Payment*, leasing transactions that are within the scope of FRS 17 *Leases*, and measurements that have some similarities to fair value but are not fair value, such as net realisable value in FRS 2 *Inventories* or value in use in FRS 36 *Impairment of Assets*.

In addition, for financial reporting purposes, fair value measurements are categorised into Level 1, 2 or 3 based on the degree to which the inputs to the fair value measurements are observable and the significance of the inputs to the fair value measurement in its entirety, which are described as follows:

- Level 1 inputs are quoted prices (unadjusted) in active markets for identical assets or liabilities that the entity can access at the measurement date;
- Level 2 inputs are inputs, other than quoted prices included within Level 1, that are observable for the asset or liability, either directly or indirectly; and
- Level 3 inputs are unobservable inputs for the asset or liability.

ADOPTION OF NEW AND REVISED STANDARDS - On 1 January 2017, the Society has adopted all the new and revised FRSs and Interpretations of FRS ("INT FRS") that are effective from that date and are relevant to its operations. The adoption of these new/revised FRSs and INT FRSs does not result in changes to the Society's accounting policies and has no material effect on the amounts reported for the current or prior years.

At the date of authorisation of these financial statements, the following new/revised FRSs and amendments to FRS that are relevant to the Society were issued but not effective:

- FRS 109 Financial Instruments ¹
- FRS 116 Leases ²

¹ Applies to annual periods beginning on or after 1 January 2018, with early application permitted.

² Applies to annual periods beginning on or after January 1, 2019, with early application permitted if FRS 115 is adopted.

2 SUMMARY OF SIGNIFICANT ACCOUNTING POLICIES (cont'd)

Consequential amendments were also made to various standards as a result of these new/revised standards.

The management anticipates that the adoption of the above FRSs and amendments to FRS in future periods will not have a material impact on the financial statements of the Society in the period of their initial adoption except for the following:

FRS 109 *Financial Instruments*

FRS 109 was issued in December 2014 to replace FRS 39 *Financial Instruments: Recognition and Measurement* and introduced new requirements for (i) the classification and measurement of financial assets and financial liabilities (ii) general hedge accounting and (iii) impairment requirements for financial assets.

All recognised financial assets that are within the scope of FRS 39 are now required to be subsequently measured at amortised cost or fair value through profit or loss with some exceptions, financial liabilities are generally subsequently measured at amortised cost.

Key requirements of FRS 109 that may be relevant to the Society:

In relation to the impairment of financial assets, FRS 109 requires an expected credit loss model, as opposed to an incurred credit loss model under FRS 39. The expected credit loss model requires an entity to account for expected credit losses and changes in those expected credit losses at each reporting date to reflect changes in credit risk since initial recognition. In other words, it is no longer necessary for a credit event to have occurred before credit losses are recognised.

Available-for-sale investments are carried at fair value as disclosed in Note 10 to the financial statements. Management anticipates that the application of FRS 109 in the future might result in changes to the classification and measurement relating to its available-for-sale investments.

FRS 116 *Leases*

FRS 116 was issued in June 2016 and will supersede FRS 17 *Leases* and its associated interpretative guidance.

The Standard provides a comprehensive model for the identification of lease arrangements and their treatment in the financial statements of both lessees and lessors. The identification of leases, distinguishing between leases and service contracts, are determined on the basis of whether there is an identified asset controlled by the customer.

Significant changes to lessee accounting are introduced, with the distinction between operating and finance leases removed and assets and liabilities recognised in respect of all leases (subject to limited exceptions for short-term leases and leases of low value assets). The Standard maintains substantially the lessor accounting approach under the predecessor FRS 17.

As at 31 December 2017, the Society has non-cancellable operating lease commitments of \$1,134,107 (2016 : \$1,040,886). FRS 17 does not require the recognition of any right-of-use asset or liability for future payments for these leases; instead, certain information is disclosed as operating lease commitments in Note 21. A preliminary assessment indicates that these arrangements will meet the definition of a lease under FRS 116, and hence the Society will recognise a right-of-use asset and a corresponding liability in respect of all these leases unless they qualify for low value or short-term leases upon the application of FRS 116. The new requirement to recognise a right-of-use asset and a related lease liability is expected to have a significant impact on the amounts recognised in the Society's financial statements and the management is currently assessing its potential impact. It is not practicable to provide a reasonable estimate of the financial effect until management completes the review.

2 SUMMARY OF SIGNIFICANT ACCOUNTING POLICIES (cont'd)

FINANCIAL INSTRUMENTS - Financial assets and liabilities are recognised on the Society's statement of financial position when the Society becomes a party to the contractual provisions of the instruments.

Effective interest method

The effective interest method is a method of calculating the amortised cost of a financial instrument and of allocating interest income or expense over the relevant period. The effective interest rate is the rate that exactly discounts estimated future cash receipts or payments through the expected life of the financial instrument, or where appropriate, a shorter period. Income and expense is recognised on an effective interest basis for debt instruments other than those financial instruments "at fair value through profit or loss".

Financial assets

All financial assets are recognised and de-recognised on a trade date basis where the purchase or sale of an investment is under a contract whose terms require delivery of the investment within the timeframe established by the market concerned, and are initially measured at fair value plus transaction costs, except for those financial assets classified as at fair value through profit or loss which are initially measured at fair value.

Financial assets are classified into the following specified categories: "available-for-sale" financial assets and "loans and receivables". The classification depends on the nature and purpose of financial assets and is determined at the time of initial recognition. The Society does not have any financial assets classified as "held-to-maturity investments" and "financial assets at fair value through profit or loss".

Cash and cash equivalents

Cash and cash equivalents comprise cash on hand, cash at bank and fixed deposits that are readily convertible to a known amount of cash and are subject to an insignificant risk of change in value.

Available-for-sale investments

Certain equity shares and debt securities held by the Society are classified as being available for sale and are stated at fair value. Fair value is determined in the manner as described in Note 4. Gains and losses arising from changes in fair value are recognised in other comprehensive income with the exception of impairment losses, interest calculated using the effective interest method and foreign exchange gains and losses on monetary assets which are recognised directly in profit or loss. Where the investment is disposed off or is determined to be impaired, the cumulative gain or loss previously recognised in other comprehensive income and accumulated in investment revaluation reserve is reclassified to profit or loss. Dividends on available-for-sale equity instruments are recognised in profit or loss when the Society's right to receive payments is established. The fair value of available-for-sale monetary assets denominated in a foreign currency is determined in that foreign currency and translated at the spot rate at the end of the reporting period.

The change in fair value attributable to translation differences that result from a change in amortised cost of the asset is recognised in profit or loss, and other changes are recognised in other comprehensive income.

2 SUMMARY OF SIGNIFICANT ACCOUNTING POLICIES (cont'd)

Loans and receivables

Receivables that have fixed or determinable payments that are not quoted in an active market are classified as “loans and receivables”. Loans and receivables are measured at amortised cost using the effective interest method less impairment. Interest is recognised by applying the effective interest method, except for short-term receivables when the effect of discounting is immaterial.

Impairment of financial assets

Financial assets are assessed for indicators of impairment at the end of each reporting period. Financial assets are considered to be impaired when there is objective evidence that, as a result of one or more events that occurred after the initial recognition of the financial asset, the estimated future cash flows of the investment have been impacted.

For available-for-sale equity instruments, a significant or prolonged decline in the fair value of the investment below its cost is considered to be objective evidence of impairment.

For financial assets carried at amortised cost, the amount of the impairment is the difference between the asset’s carrying amount and the present value of estimated future cash flows, discounted at the original effective interest rate.

The carrying amount of the financial asset is reduced by the impairment loss directly for all financial assets with the exception of receivables where the carrying amount is reduced through the use of an allowance account. When a receivable is uncollectible, it is written off against the allowance account. Subsequent recoveries of amounts previously written off are credited to the allowance account. Changes in the carrying amount of the allowance account are recognised in profit or loss.

When an available-for-sale financial asset is considered to be impaired, cumulative gains or losses previously recognised in other comprehensive income are classified to profit or loss. With the exception of available-for-sale equity instruments, if, in a subsequent period, the amount of the impairment loss decreases and the decrease can be related objectively to an event occurring after the impairment loss was recognised, the previously recognised impairment loss is reversed through profit or loss to the extent the carrying amount of the investment at the date the impairment is reversed does not exceed what the amortised cost would have been had the impairment not been recognised.

In respect of available-for-sale equity instruments, impairment losses previously recognised in profit or loss are not reversed through profit or loss. Any subsequent increase in fair value after an impairment loss is recognised in other comprehensive income. In respect of available-for-sale debt instruments, impairment losses are subsequently reversed through profit or loss if an increase in the fair value of the investment can be objectively related to an event occurring after the recognition of the impairment loss.

2 SUMMARY OF SIGNIFICANT ACCOUNTING POLICIES (cont'd)

Derecognition of financial assets

The Society derecognises a financial asset only when the contractual rights to the cash flows from the asset expire, or it transfers the financial asset and substantially all the risks and rewards of ownership of the asset to another entity. If the Society neither transfers nor retains substantially all the risks and rewards of ownership and continues to control the transferred asset, the Society recognises its retained interest in the asset and an associated liability for amounts it may have to pay. If the Society retains substantially all the risks and rewards of ownership of a transferred financial asset, the Society continues to recognise the financial asset and also recognises a collateralised borrowing for the proceeds received.

Financial liabilities

Financial liabilities are classified according to the substance of the contractual arrangements entered into and the definitions of a financial liability.

Payables and accruals

Other payables are initially measured at fair value, net of transaction costs, and are subsequently measured at amortised cost, using the effective interest method, except for short-term payables when the effect of discounting is immaterial.

Derecognition of financial liabilities

The Society derecognises financial liabilities when, and only when, the Society’s obligations are discharged, cancelled or expire.

LEASES - Leases are classified as finance leases whenever the terms of the lease transfer substantially all the risks and rewards of ownership to the lessee. All other leases are classified as operating leases.

Rentals payable under operating leases are charged to profit or loss on a straight-line basis over the term of the relevant lease unless another systematic basis is more representative of the time pattern in which economic benefits from the leased asset are consumed. Contingent rentals arising from operating leases are recognised as an expense in the period in which they are incurred.

In the event that lease incentives are received to enter into operating leases, such incentives are recognised as a liability. The aggregate benefit of incentives is recognised as a reduction of rental expense on a straight-line basis, except where another systematic basis is more representative of the time pattern in which economic benefits from the leased asset are consumed.

2 SUMMARY OF SIGNIFICANT ACCOUNTING POLICIES (cont'd)

PROPERTY, PLANT AND EQUIPMENT - Property, plant and equipment are stated at cost less accumulated depreciation and any accumulated impairment losses.

Depreciation is charged so as to write off the cost of assets over their estimated useful lives, using the straight-line method, on the following bases:

Motor vehicles	-	5 years
Furniture and fittings	-	5 years
Medical equipment	-	3 to 5 years
Office equipment	-	3 to 5 years
Building and renovation	-	3 to 10 years
Computer system	-	3 years
Leasehold land	-	30 years

Construction in progress is stated at cost and is not depreciated. Cost includes direct related expenditure incurred during the period of construction and up to the completion of the construction. The accumulated costs will be reclassified to the appropriate property, plant and equipment account when the construction is substantially completed and the asset is ready for its intended use.

Fully depreciated assets which are still in use are retained in the financial statements.

The estimated useful lives, residual values and depreciation method are reviewed at the end of each year end, with the effect of any changes in estimate accounted for on a prospective basis.

The gain or loss arising from disposal or retirement of an item of property, plant and equipment is determined as the difference between the sales proceeds and the carrying amount of the asset and is recognised in profit or loss.

DONATED SUPPLIES - Donated supplies pertain to donation-in-kind where its value can be estimated with sufficient reliability. This value is the price that the Society estimate that they would have to pay in the open market for an equivalent item or the value that the Society expects to realise the item for. When the value of donation-in-kind cannot be estimated with sufficient reliability or is insignificant in amount, the donation-in-kind would not be recognised as part of donated supplies and only income shall be included in the financial period in which the donation-in-kind is sold.

IMPAIRMENT OF NON-FINANCIAL ASSETS - At the end of each reporting period, the Society reviews the carrying amounts of its non-financial assets to determine whether there is any indication that those assets have suffered an impairment loss. If any such indication exists, the recoverable amount of the asset is estimated in order to determine the extent of the impairment loss (if any).

Recoverable amount is the higher of fair value less costs to sell and value-in-use. In assessing value-in-use, the estimated future cash flows are discounted to their present value using a pre-tax discount rate that reflects current market assessments of the time value of money and the risks specific to the asset for which the estimates of future cash flows have not been adjusted.

2 SUMMARY OF SIGNIFICANT ACCOUNTING POLICIES (cont'd)

If the recoverable amount of an asset (or cash-generating unit) is estimated to be less than its carrying amount, the carrying amount of the asset (cash-generating unit) is reduced to its recoverable amount. An impairment loss is recognised immediately in profit or loss.

Where an impairment loss subsequently reverses, the carrying amount of the asset (cash-generating unit) is increased to the revised estimate of its recoverable amount, but only to the extent that the increased carrying amount does not exceed the carrying amount that would have been determined had no impairment loss been recognised for the asset (cash-generating unit) in prior years. A reversal of an impairment loss is recognised immediately in profit or loss.

PROVISIONS - Provisions are recognised when the Society has a present obligation (legal or constructive) as a result of a past event, it is probable that the Society will be required to settle the obligation, and a reliable estimate can be made of the amount of the obligation.

The amount recognised as a provision is the best estimate of the consideration required to settle the present obligation at the end of the reporting period, taking into account the risks and uncertainties surrounding the obligation. Where a provision is measured using the cash flows estimated to settle the present obligation, its carrying amount is the present value of those cash flows.

When some or all of the economic benefits required to settle a provision are expected to be recovered from a third party, the receivable is recognised as an asset if it is virtually certain that reimbursement will be received and the amount of the receivable can be measured reliably.

INCOME - Income is recognised to the extent that it is probable that the economic benefits will flow to the Society and the revenue can be reliably measured.

- (i) Donations and income from fund raising projects are recognised as and when the Society's entitlement to such income is established with certainty and the amount can be measured with sufficient reliability. This normally coincides with the receipt of the donation and income from the fund raising project. Donations received in advance for future fund raising projects are deferred and recognised as incoming resources as and when the fund raising projects are held;
- (ii) Grants and subsidies are recognised as income to match the related expenditure;
- (iii) Interest income on operating funds is recognised on an accrual basis;
- (iv) All other income including membership subscriptions are recognised on an accrual basis;
- (v) Revenue from rendering of services is recognised when the services are performed; and
- (vi) Programme Support Recovery income is recognised upon receipt and disbursement of solicited and unsolicited donations for international relief and assistance.

2 SUMMARY OF SIGNIFICANT ACCOUNTING POLICIES (cont'd)

GOVERNMENT GRANTS - Government grants are not recognised until there is reasonable assurance that the Society will comply with the conditions attached to them and the grants will be received.

Grants for the purchase of depreciable assets are taken to the deferred capital grants upon utilisation of the grants if the assets are capitalised. Deferred capital grants are recognised in the statement of financial activities and other comprehensive income over the periods necessary to match the depreciation of the assets financed by the related grants. On disposal of an item of property, plant and equipment, the balance of the related grants is recognised in the statement of financial activities and other comprehensive income to match the net carrying amount of the property, plant and equipment disposed.

Other government grants are recognised as income over the periods necessary to match them with the costs for which they are intended to compensate, on a systematic basis. Government grants that are receivable as compensation for expenses or losses already incurred or for the purpose of giving immediate financial support to the Society with no future related costs are recognised in profit or loss in the period in which they become receivable.

UNRESTRICTED FUNDS – The unrestricted funds are funds which are available to be used for any of the Society's purposes.

RESTRICTED FUND – The restricted funds are funds which are available to be used for specific purposes programs.

INTERNATIONAL RELIEF FUNDS – International relief funds are set up to account for funds held in trust where the Society is not the owner and beneficiary of the funds received from the public. The receipts and expenditure in respect of agency funds are taken directly to the funds accounts and the net assets relating to the funds are shown as a separate line item in the statement of financial position.

RETIREMENT BENEFIT COSTS - Payments to defined contribution retirement benefit plans are charged as an expense when employees have rendered the services entitling them to the contributions. Payments made to state-managed retirement benefit schemes, such as the Singapore Central Provident Fund, are dealt with as payments to defined contribution plans where the Society's obligations under the plans are equivalent to those arising in a defined contribution retirement benefit plan.

EMPLOYEE LEAVE ENTITLEMENT - Employee entitlements to annual leave are recognised when they accrue to employees. A provision is made for the estimated liability for annual leave as a result of services rendered by employees up to the end of the reporting period.

2 SUMMARY OF SIGNIFICANT ACCOUNTING POLICIES (cont'd)

FOREIGN CURRENCY TRANSACTIONS AND TRANSLATION - The financial statements are measured and presented in Singapore dollars, which is the currency of the primary economic environment in which the Society operates (its functional currency).

In preparing the financial statements, transactions in currencies other than the Society's functional currency are recorded at the rate of exchange prevailing on the date of the transaction. At the end of the reporting period, monetary items denominated in foreign currencies are retranslated at the rates prevailing at the end of the reporting period. Non-monetary items carried at fair value that are denominated in foreign currencies are retranslated at the rates prevailing on the date when the fair value was determined. Non-monetary items that are measured in terms of historical cost in a foreign currency are not retranslated.

Exchange differences arising on the settlement of monetary items, and on retranslation of monetary items are included in profit or loss for the period.

3 CRITICAL ACCOUNTING JUDGEMENTS AND KEY SOURCES OF ESTIMATION UNCERTAINTY

In the application of the Society's accounting policies, which are described in Note 2, management is required to make judgements, estimates and assumptions about the carrying amounts of assets and liabilities that are not readily apparent from other sources. The estimates and associated assumptions are based on historical experience and other factors that are considered to be relevant. Actual results may differ from these estimates.

The estimates and underlying assumptions are reviewed on an ongoing basis. Revisions to accounting estimates are recognised in the period in which the estimate is revised if the revision affects only that period, or in the period of the revision and future periods if the revision affects both current and future periods.

Critical judgements in applying the Society's accounting policies

Management is of the opinion that any instances of application of judgements on the Society's accounting policies are not expected to have a significant effect of the amounts recognised in the financial statements.

Key sources of estimation uncertainty

The Society does not have any key sources of estimation uncertainty at the end of the reporting period that have a significant risk of causing a material adjustment to the carrying amounts of assets and liabilities within the next financial year, except as discussed below.

3 CRITICAL ACCOUNTING JUDGEMENTS AND KEY SOURCES OF ESTIMATION UNCERTAINTY (cont'd)

Valuation of donated supplies

As described in Note 2, the value of donation-in-kind is estimated based on the price the Society has to pay in the open market for an equivalent item or the value that the Society expects to realise the item for. In estimating the value, management exercised judgement by considering the retail values of the donation-in-kind and the value that the Society expects to realise the item.

The carrying amount of donated supplies is disclosed in Note 8 to the financial statements.

4 FINANCIAL INSTRUMENTS, FINANCIAL RISKS AND CAPITAL MANAGEMENT

(a) Categories of financial instruments

The following table sets out the financial instruments as at the end of the reporting period:

	2017	2016
	\$	\$
Financial assets		
Available-for-sale investments, at fair value	5,512,890	5,664,253
At amortised cost:		
Receivables	1,690,834	904,339
Cash and cash equivalents	6,010,536	8,510,073
	<u>13,214,260</u>	<u>15,078,665</u>
Financial liabilities		
Payables, at amortised cost	<u>1,395,464</u>	<u>960,713</u>

(b) Financial risk management policies and objectives

Management monitors and manages the financial risks relating to the operations of the Society to minimise adverse potential effects on financial performance. These risks include market risk (including foreign exchange risk and interest rate risk), investment price risk, credit risk, liquidity risk and fair value risk. Management manages and monitors these exposures to ensure appropriate measures are implemented in a timely and effective manner.

There has been no change to the Society's exposure to these financial risks or the manner in which it manages and measures these risk. Market risk exposures are measured using sensitivity analysis indicated below:

(i) Foreign exchange risk management

The Society transacts mainly in Singapore dollars and is therefore not exposed to foreign currency risk.

4 FINANCIAL INSTRUMENTS, FINANCIAL RISKS AND CAPITAL MANAGEMENT (cont'd)

(ii) Interest rate risk management

The Society is exposed to interest rate risk as changes in interest rates affect the market value of its investment portfolio. The Society has no interest-bearing financial liabilities.

No sensitivity analysis is prepared as the Society does not expect any material effect on the Society's surplus for the year arising from the effects of reasonably possible changes to interest rates on interest bearing financial instruments at the end of the reporting period.

(iii) Investment price risk management

Investment price risk arises mainly from uncertainty about the future prices of financial instruments invested by the Society. It represents the potential financial loss the Society might suffer through holding investments in the face of price movements. It is the Society's policy to achieve an appropriate diversification in its investment portfolio in order to mitigate such risk.

(iv) Credit risk management

Credit risk is the potential financial loss resulting from the failure of a customer or a counterparty to settle its financial and contractual obligations to the Society, as and when they fall due. The maximum exposure to credit risk in the event that the counterparties fail to perform their obligations as at the end of financial year in relation to each class of recognised financial assets is the carrying amounts of those assets as stated in the statement of financial position.

The Society places its cash and bank balances with reputable institutions.

The maximum credit risk that the Society is exposed to is represented by the carrying amounts of its financial assets as stated in the statement of financial position. Management is of the view that no allowance for doubtful debts is required as these receivables are recoverable.

(v) Liquidity risk management

Liquidity risk refers to the risk that the Society is unable to pay its creditors due to insufficient funds. The Society is primarily funded via grants and donations and it attempts to ensure sufficient liquidity at all times through efficient cash management. All financial assets and financial liabilities are repayable on demand or due within 1 year from the end of the reporting period, except for available-for-sale investments classified as non-current assets.

4 FINANCIAL INSTRUMENTS, FINANCIAL RISKS AND CAPITAL MANAGEMENT (cont'd)

(vi) Fair value of financial assets and financial liabilities

The carrying amounts of financial assets and financial liabilities approximate their respective fair values due to the relatively short-term maturity of these financial instruments.

The Society determines fair values of available-for-sale financial assets in the following manner:

Financial assets	Fair value as at		Fair value hierarchy	Valuation techniques and key inputs	Sensitivity Analysis (Note 1)	
	2017	2016				
	Assets	Assets				
Available-for-sale investments: (see Note 10)					2017	2016
	\$	\$			\$	\$
1) Quoted equity shares	2,160,800	2,185,750	Level 1 (2016 : level 1)	Quoted bid prices in an active market.	216,080	218,575
2) Quoted debt securities	3,352,090	3,478,503	Level 1 (2016 : level 1)	Quoted bid prices in an active market.	335,209	347,850

Note 1: If the quoted prices are 10% higher / lower while all the other variable were held constant, the Society's investment revaluation reserves would increase / decrease as detailed in the above table.

There were no transfers between levels of the fair value hierarchy in the period.

Except as detailed in the above table, the Society had no other financial assets or liabilities carried at fair value.

(c) Capital risk management policies and objectives

The Society manages its capital to ensure it will be able to continue as a going concern. The capital structure of the Society consists only of funds and reserves. Management reviews the capital structure on a regular basis. The Society's overall strategy remains unchanged from 2016.

5 COMPENSATION OF KEY MANAGEMENT PERSONNEL

The remuneration of the member of council management during the year are as follows:

	2017	2016
	\$	\$
Short-term benefits	161,070	162,762
Post-employment benefits	6,996	9,076
	168,066	171,838

The Society paid for the following expenses incurred by council members for official events and meetings.

Travel and meeting expenses	20,345	7,087
Number of office bearers	2	2

In 2016, the Society received income of \$36,000 from the provision of transport service to a company in which a council member has interest in.

6 CASH AND CASH EQUIVALENTS

	2017	2016
	\$	\$
Fixed deposits	-	2,200,000
Cash at bank balances	6,010,536	6,310,073
	6,010,536	8,510,073

In 2016, fixed deposits bore interest ranging from 1.85% to 1.93% per annum and for a tenure of 1 to 4 months. The fixed deposits could be drawn without incurring significant cost.

7 OTHER RECEIVABLE, DEPOSITS AND PREPAYMENTS

	2017	2016
	\$	\$
Blood Donor Recruitment Programme subsidy receivable from Health Sciences Authority	1,116,875	-
Grants/Funding receivables	166,435	51,349
Deposits and prepayments	182,662	102,239
Interest receivable	35,922	179,600
Wages credit scheme receivable	146,348	141,814
Fundraising receivable	-	228,195
Training Academy fees and Transport Aid	129,521	212,794
Others	95,733	90,587
	<u>1,873,496</u>	<u>1,006,578</u>

Receivables are not past due and not impaired.

8 DONATED SUPPLIES

Donated supplies relate to first aid kits received as donation-in-kind. The first aid kits are to be distributed to certain countries which have been hit by disasters. The value of the donated supplies is estimated based on open market prices for an equivalent item and the distribution is funded by the International Relief Funds (Note 14).

9 PROPERTY, PLANT AND EQUIPMENT

	Motor vehicles	Furniture and fittings	Medical equipment	Office equipment	Building and renovation	Computer System	Leasehold land	Construction in progress	Total
	\$	\$	\$	\$	\$	\$	\$	\$	\$
Cost									
At 1 January 2016	950,509	368,897	424,266	519,438	1,962,553	-	-	-	4,225,663
Additions	518,119	-	20,799	207,692	7,490	-	1,761,981	38,710	2,554,791
Disposals	-	-	-	(294)	-	-	-	-	(294)
At 31 December 2016	1,468,628	368,897	445,065	726,836	1,970,043	-	1,761,981	38,710	6,780,160
Additions	-	-	103,580	144,026	16,784	159,845	79,112	134,416	637,763
At 31 December 2017	<u>1,468,628</u>	<u>368,897</u>	<u>548,645</u>	<u>870,862</u>	<u>1,986,827</u>	<u>159,845</u>	<u>1,841,093</u>	<u>173,126</u>	<u>7,417,923</u>
Accumulated depreciation									
At 1 January 2016	403,653	368,897	336,045	398,954	1,826,969	-	-	-	3,334,518
Depreciation for the year	196,283	-	40,080	83,899	62,377	-	46,944	-	429,583
Disposals	-	-	-	(294)	-	-	-	-	(294)
At 31 December 2016	599,936	368,897	376,125	482,559	1,889,346	-	46,944	-	3,763,807
Depreciation for the year	236,060	-	34,693	112,429	58,714	26,287	56,333	-	524,516
At 31 December 2017	<u>835,996</u>	<u>368,897</u>	<u>410,818</u>	<u>594,988</u>	<u>1,948,060</u>	<u>26,287</u>	<u>103,277</u>	<u>-</u>	<u>4,288,323</u>
Carrying amount									
At 31 December 2016	<u>868,692</u>	<u>-</u>	<u>68,940</u>	<u>244,277</u>	<u>80,697</u>	<u>-</u>	<u>1,715,037</u>	<u>38,710</u>	<u>3,016,353</u>
At 31 December 2017	<u>632,632</u>	<u>-</u>	<u>137,827</u>	<u>275,874</u>	<u>38,767</u>	<u>133,558</u>	<u>1,737,816</u>	<u>173,126</u>	<u>3,129,600</u>

9 PROPERTY, PLANT AND EQUIPMENT (cont'd)

In addition to the above property, plant and equipment, the Society occupies the building, Red Cross House, situated at 15 Penang Lane, with lease term of 30 years commencing from 23 March 2016, on a rent-free basis till the end of the lease term. The building has been gazetted as a conservation building and the rent-free arrangement is expected to continue beyond the lease term until further notice.

10 AVAILABLE-FOR-SALE INVESTMENTS

	2017	2016
	\$	\$
Quoted debt securities, at fair value	3,352,090	3,478,503
Quoted equity shares, at fair value	2,160,800	2,185,750
	<u>5,512,890</u>	<u>5,664,253</u>

The investments in quoted debt securities have interest rates ranging from 2.36% to 3.90% (2016 : 1.11% to 3.90%) per annum and have maturity dates ranging from 2018 to 2024 (2016 : 2017 to 2024). The fair value of the quoted debt securities are estimated by reference to the current market value provided by the custodian bank.

Quoted equity shares offer the opportunity for return through dividend income. The fair values of these equity shares are based on closing quoted market prices on the last market day of the financial year.

11 OTHER PAYABLES AND ACCRUALS

	2017	2016
	\$	\$
Accrued operating expenses	1,226,338	820,323
Grants received in advance from Lee Foundation	584,071	599,726
Grants received in advance for Specific Projects	142,503	184,948
Employee benefits	167,066	140,390
Residents' deposits from Home for the Disabled	2,060	32,060
Grants received in advance from Ministry of Education	-	9,000
Grants received in advance from Ministry of Social and Family Development	128,498	45,911
Grants received in advance from Community Silver Trust	629,743	976,075
Grants received in advance from Care and Share	-	403,546
	<u>2,880,279</u>	<u>3,211,979</u>

12 DEFERRED CAPITAL GRANTS

	2017	2016
	\$	\$
At the beginning of financial year	637,429	314,936
Transfer from grants received in advance (Note 11)	424,146	461,830
Transfer to statement of financial activities and other comprehensive income	(229,380)	(139,337)
At the end of the financial year	<u>832,195</u>	<u>637,429</u>

Certain reclassifications have been made to prior year's financial statements to enhance comparability with the current year's financial statements. As a result, certain line items have been amended in the statement of the financial position and the related notes to the financial statements. Comparative figures have been reclassified to conform to the current year's presentations.

No third statement of financial position is presented as there is no material impact to the financial position of the Society as at 1 January 2016.

	Previously reported	After reclassification
	2016	2017
	\$	\$
Other payables and accruals (Note 11)	637,429	-
Deferred capital grants	-	637,429

13 RESTRICTED FUNDS

The fund comprises the cumulative operating surplus related to the operations of Home for the Disabled and Transport Aid.

	Home for the Disabled	Transport Aid	Total
	\$	\$	\$
Operating surplus at 1 January 2016	732,763	-	732,763
Deficit for the year	(257,355)	(573,546)	(830,901)
Transfer from restricted funds to unrestricted fund	(38,969)	(3,091)	(42,060)
Transfer from unrestricted fund to restricted funds	-	576,637	576,637
	(296,324)	-	(296,324)
Operating surplus at 31 December 2016	436,439	-	436,439
Deficit for the year	(436,596)	(859,068)	(1,295,664)
Transfer from restricted funds to unrestricted fund	(11,560)	(3,555)	(15,115)
Transfer from unrestricted fund to restricted funds	11,717	862,623	874,340
	(436,439)	-	(436,439)
Balance at 31 December 2017	-	-	-

14 INTERNATIONAL RELIEF FUNDS ("IRF")

The Society receives donations from the public in response to international public appeals for relief efforts in disaster and crisis-stricken countries. The funds received are in the custody of the Society and are disbursed to the International Federation of Red Cross and Red Crescent Societies ("IFRC") and International Committee of the Red Cross ("ICRC") and national societies of affected countries for specific relief cause and development work specified in the public appeal. These are not reflected in the statement of financial position and statement of financial activities and other comprehensive income of the Society. The Society had set up the Committee on Humanitarian Assistance and International Response to administer the IRF.

	2017	2016
	\$	\$
Represented by:		
- Fixed deposits	15,000,000	9,963,316
- Cash at bank and in hand	11,006,604	22,266,414
- Interest receivable	72,460	112,973
	26,079,064	32,342,703

14 INTERNATIONAL RELIEF FUNDS ("IRF") (cont'd)

Designated country/disaster	At beginning of the year	Collections	Disbursements	Interest earned	Programme Support Recovery	Other expenditures*	At end of the year
	\$	\$	\$	\$	\$	\$	\$
Miscellaneous funds	1,717,707	123,245	160,552	469	5,918	-	1,674,951
Indonesia Relief Fund	428,994	1,500	72,306	1,756	1,491	-	358,453
China Earthquake	5,478,209	-	1,141,231	37,090	19,526	13,818	4,340,724
Myanmar Cyclone	1,466,437	-	247,118	7,702	4,942	15,374	1,206,705
Indonesia Padang Earthquake	119,756	-	-	994	-	-	120,750
Philippines Tropical Storm	96,276	-	-	799	-	-	97,075
Pakistan Flood	21,152	-	16,300	-	-	-	4,852
SEA Tropical Storm	26,766	-	15,099	135	302	-	11,500
Haiti Relief Fund	75,972	-	-	-	-	-	75,972
Japan Disaster Relief Fund	6,084,271	-	1,283,577	34,740	20,230	12,604	4,802,600
Sichuan Earthquake	244,484	-	-	2,029	-	-	246,513
SEA Emergencies	26,796	-	6,927	179	139	-	19,909
Haiyan Relief Fund	2,671,882	-	672,566	13,633	13,451	11,969	1,987,529
Malaysian Flood	153,090	300	-	-	9	-	153,381
Cyclone Pam Relief Fund	68,380	-	35,234	166	705	-	32,607
Myanmar Floods Relief Fund	209,716	-	-	1,397	-	-	211,113
South India Flood Relief Fund	354,477	-	1,410	2,205	28	-	355,244
Nepal Earthquake Relief Fund	6,650,814	1,420	2,222,194	34,149	32,038	29,232	4,402,919
Japan Earthquake	194,466	-	-	821	-	-	195,287
Ecuador Earthquake	48,247	225	-	157	7	-	48,622
Tidal Waves Asia Fund	1,730,694	-	331,962	10,120	6,639	12,812	1,389,401
Rakhine Relief Fund	-	152,271	44,266	242	5,453	3,424	99,370
Sri Lanka Floods	-	242,750	132,950	869	9,941	-	100,728
Disaster Response Emergency Fund	4,010,682	-	342,113	30,637	6,842	8,204	3,684,160
Humanitarian Response Fund	463,435	-	8,363	3,794	167	-	458,699
Total	32,342,703	521,711	6,734,168	184,083	127,828	107,437	26,079,064

* Other expenditures comprise of the recharge of staff cost and the annual contribution to IFRC (Note 18).

Miscellaneous funds – These balances were either:

- (i) Residual amounts or donations made after the planned relief efforts had been completed; or
- (ii) Donations made for specific countries for which the Society had not made any appeals.

14 INTERNATIONAL RELIEF FUNDS (“IRF”) (cont’d)

Indonesia Relief Fund – The Society has committed to help Palang Merah Indonesia (Indonesia Red Cross) develop regional warehouse and offices in Banjarmasin and Semarang, the Merapi POSKO Office (Command office) in Yogyakarta and the renovation of training centre facilities in Surabaya to enhance the disaster preparedness and response capabilities of Palang Merah Indonesia to respond to emergencies.

China Earthquake – The Society has committed to support projects in partnership with Red Cross Society of China and the Sichuan Province Foundation of Poverty Alleviation in infrastructure and community projects.

Myanmar Cyclone – The Society is working together with Myanmar Red Cross in identifying humanitarian projects including equipping of digital divide and information sharing projects.

Indonesia Padang Earthquake –The Society is in discussion with the Palang Merah Indonesia (Indonesia Red Cross) to utilise the balance funds.

Japan Disaster Relief Fund – The Society has committed to support projects in Japan tsunami affected areas. Namely, the Miyako Athletic Field, Singapore - Rikuzentakata Scholarship Fund, Rikuzentakata City Library, Minamisanriku Town Library, Shichigahama After School Activity Centre and Soma City Psychosocial Support in Schools Programme.

Sichuan Earthquake – The Society had disbursed funds to the National Society of China during the acute phase and will scope and undertake new projects.

Haiyan Relief Fund – The Society disbursed funds to various implementing partners including Philippine Red Cross, IFRC and ICRC. Acute phase efforts are completed, reconstruction efforts are ongoing and the Society will continue to scope new projects to disburse the remaining of the fund.

Malaysian Flood – The Society is working with Malaysia Red Crescent to identify suitable humanitarian projects in the flood affected areas.

Myanmar Floods Relief Fund – The Society will continue to work with Myanmar Red Cross on recovery projects supporting the floods affected regions, including the support of the recovery of schools, livelihoods etc.

South India Flood Relief Fund – The Society will work with the Indian Red Cross on recovery projects, focusing on schools and livelihoods of the affected communities.

Nepal Earthquake Relief Fund – The Society has identified over 50 community facilities to be rebuilt together with partners including Paramva, Himalayan Aid, Rolwaling Sagag Choling Monastery, Compassionate Hands for Nepal, Living Hope for Nepal, Touch Community, Operation Hope Foundation, HANDs, D2N, Nepal Red Cross.

Japan Earthquake – The Society will continue to seek community projects to support earthquake affected people together with the Japanese Red Cross Society and other partners.

Tidal Waves Asia Fund (“TWAF”) – The Society had set up the Tsunami Reconstruction Facilitation Committee (“TFRC”) to administer the fund. This fund is used to help victims affected by the earthquake and tsunami which occurred on 26 December 2004. To date, the TRFC had approved funding for projects initiated by the Society, joint projects with the government and corporate sector, and projects by Singapore-registered Voluntary Welfare Organisations and Non-Governmental Organisations. The Society continues to work with the various parties in Indonesia and Sri Lanka, in projects to enhance education and health facilities.

14 INTERNATIONAL RELIEF FUNDS (“IRF”) (cont’d)

Disaster Response Emergency Fund (“DREF”) – In 2012, the Society received approval from the Charities Unit of Ministry of Culture, Community and Youth (MCCY) to transfer \$5,000,000 of the TWAF to DREF. The fund was set up to enable the Society to provide assistance to disaster afflicted countries during acute emergency phases and recovery phases. The fund is administered in a similar manner as the TWAF, and its use is restricted to disaster relief efforts undertaken by the Society or jointly with partners. Besides allowing the Society to do rapid deployment, the fund is also used to train and prepare responders for rapid deployment and to equip the Society for such purposes.

Humanitarian Response Fund (“HRF”) – The fund was set up in 2014 to consolidate the inactive unsolicited funds with balances not sufficient to undertake any project or activity individually. These funds are consolidated into a common pool to undertake small-scale (below \$50,000) humanitarian projects within and beyond the region. The fund is used for small rehabilitation projects in Association of Southeast Asian Nations (ASEAN) and beyond, as well as, to provide training to better prepare vulnerable communities against natural and man-made disasters.

15 INCOME TAXATION

The Society is an approved charity institution under the Charities Act Chapter 37 and is exempted from tax under the Income Tax Act.

In 2017, the Society paid to Inland Revenue Authority of Singapore for input GST that was claimed prior years for the period 1 April 2011 to 31 March 2016. This arose from the difference in judgement in performing input tax apportionment for both business and non-business activities.

16 TAX EXEMPT RECEIPT

The Society enjoys a concessionary tax treatment whereby qualifying donors are granted 2.5 times tax deduction for the donations made to the Society.

	2017	2016
	\$	\$
Donations for which tax exempt receipts were issued	1,416,425	1,036,851

17 PROGRAMME SUPPORT RECOVERY

With effect from 1 January 2011, the Society has levied a Programme Support Recovery charge on all solicited and unsolicited donations for international relief and assistance at the following rates:

First \$5,000,000	5%
Next \$10,000,000	2%
Amounts above \$15,000,000	1%

60% of the programme support recovery charge will be recognised upon collection of the funds whilst the remaining 40% will be recognised upon disbursement of the funds. The levy rates are reassessed annually.

18 MISCELLANEOUS

In 2017, the Society has recharged \$107,437 (2016 : \$120,390) of staff costs that is directly attributable to the international relief and assistance to the corresponding solicited and unsolicited International Relief Funds (Note 14) pursuant to the Council's approval.

In 2017, in view of the limited contribution of the IFRC to the local services of the Society, the Society has allocated 80% (2016 : 80%) of its annual contribution to the IFRC or \$164,204 (2016 : \$163,927) to the DREF pursuant to the Council's approval.

The miscellaneous income mainly comprises of wage credit, special employment credit and temporary employment credit (Note 20).

19 FUNDRAISING COSTS

	2017	2016
	\$	\$
Manpower and operating costs	487,204	376,966
Fundraising events	423,465	189,445
Support costs (Note 23)	159,741	101,338
Administrative and operating expenses	45,631	46,606
Depreciation of property, plant and equipment	15,050	9,147
	1,131,091	723,502

Pursuant to regulation 15 of the Charities (Institutions of a Public Character) Regulations, total fund raising and sponsorship expenses for the year shall not exceed 30% of total gross receipts from fundraising and sponsorships. The Society's total fundraising expenses represent approximately 22.2% (2016 : 29.8%) of the total gross receipts from fundraising for the year.

20 SURPLUS (DEFICIT) FOR THE YEAR

Surplus (Deficit) for the year has been arrived after charging (crediting):

	2017	2016
	\$	\$
Depreciation of property, plant and equipment	524,516	429,583
Interest income	(8,284)	(108,734)
Dividend income	(209,547)	(222,840)
Salary expenses	6,066,269	5,488,277
Bonus expense	562,433	489,989
Contributions to defined contribution plans	845,982	745,414
Foreign worker levy	263,059	247,762
Employee benefits	166,119	141,195
Wage credit scheme	(113,679)	(87,940)
Special employment credit	(42,226)	(59,884)
Temporary employment credit	(26,460)	(50,943)
(Gain) Loss on disposal	(3,300)	19,750

The number of employees whose remuneration exceeded \$100,000 during the year was as follows:

	2017	2016
	1	2

\$100,000 to \$200,000

The Society received in-kind sponsorship for its fundraising events in the form of prizes, goodie bags and items for auction. It also received consumables and food items for its Home for the Disabled. As part of its awareness building and publicity efforts, the Blood Donor Recruitment Programme undertaken by the Society also garners corporate and individual support for its publicity drives, exhibitions, road shows, and other activities to promote public awareness in blood donation. For the above sponsorships, the Society does not recognise the above in-kind sponsorships in the statement of financial activities and other comprehensive income.

21 OPERATING LEASES ARRANGEMENTS

	2017	2016
	\$	\$
Payment recognised as an expense during the year *	80,956	76,094

* Rental expenses do not include lease payments of \$187,164 (2016 : \$187,164) incurred by the Society that were reimbursed by the Ministry of Education (“MOE”) and lease payments of \$276,384 (2016 : \$276,384) incurred by the Society that were reimbursed by the Ministry of Social and Family Development (“MSFD”).

At the end of the reporting period, the Society has outstanding commitments under non-cancellable operating leases which fall due as follows:

	2017	2016
	\$	\$
Within 1 year	542,338	538,289
Within 2 to 5 years	591,769	486,774
More than 5 years	-	15,823
	1,134,107	1,040,886

The Society leases office premises and residential homes for the Home for the Disabled. Such lease payments are subsidised by the MOE (100%) and the MSFD (90%) respectively.

22 CHARITABLE ACTIVITIES

	Training Academy	Community Service – Transport Aid	Blood Donor Recruitment Programme	Home for the Disabled	Service and disaster management	International Services	Red Cross Youth	Total 2017
	\$	\$	\$	\$	\$	\$	\$	\$
Manpower and operating costs	1,147,452	790,740	2,058,352	2,547,652	834,469	305,193	665,262	8,349,120
Depreciation	19,195	167,509	281	63,998	48,402	1,734	163	301,282
Support costs	447,540	170,033	203,461	780,553	492,511	352,413	123,355	2,569,866
	1,614,187	1,128,282	2,262,094	3,392,203	1,375,382	659,340	788,780	11,220,268

	Training Academy	Community Service – Transport Aid	Blood Donor Recruitment Programme	Home for the Disabled	Service and disaster management	International Services	Red Cross Youth	Total 2016
	\$	\$	\$	\$	\$	\$	\$	\$
Manpower and operating costs	1,080,008	559,250	2,103,306	2,244,066	667,847	315,749	516,212	7,486,438
Depreciation	18,324	114,515	-	66,534	24,049	2,392	-	225,814
Support costs	504,894	192,035	295,238	920,229	484,956	418,733	130,498	2,946,583
	1,603,226	865,800	2,398,544	3,230,829	1,176,852	736,874	646,710	10,658,835

23 SUPPORT COSTS

	Finance	Human Resource	Corporate Communications and Marketing	Administration and Information Technology	Secretary General Office	Purchasing	Membership and Volunteer Development	Total 2017
	\$	\$	\$	\$	\$	\$	\$	\$
Fundraising	37,684	13,770	20,166	46,672	20,220	6,547	14,682	159,741
Charitable activities:								
- Training academy	58,620	24,786	75,622	173,354	90,991	6,547	17,618	447,538
- Community service	37,684	27,540	30,249	46,672	25,275	2,619	-	170,039
- Transport Aid								
- Blood Donor Recruitment Programme	33,497	27,540	55,456	-	35,385	10,475	41,109	203,462
- Home for the Disabled	104,678	140,451	126,036	233,362	96,046	12,439	67,537	780,549
- Service and disaster management	62,807	27,540	100,829	93,345	85,936	10,475	111,582	492,514
- International services	62,807	8,262	70,580	40,005	126,376	3,273	41,109	352,412
- Red Cross Youth	20,936	5,508	25,207	33,337	25,275	13,094	-	123,357
	418,713	275,397	504,145	666,747	505,504	65,469	293,637	2,729,612

	Finance	Human Resource	Corporate Communications and Marketing	Administration and Information Technology	Secretary General Office	Purchasing	Membership and Volunteer Development	Total 2016
	\$	\$	\$	\$	\$	\$	\$	\$
Fundraising	14,250	10,533	20,819	28,014	18,270	1,053	8,399	101,338
Charitable activities:								
- Training academy	61,749	23,698	104,095	182,093	109,618	6,842	16,799	504,894
- Community service	42,749	26,331	41,638	49,025	30,450	1,842	-	192,035
- Transport Aid								
- Blood Donor Recruitment Programme	61,749	23,698	104,095	-	60,899	-	44,797	295,238
- Home for the Disabled	137,748	139,556	166,552	280,143	115,708	10,527	69,995	920,229
- Service and disaster management	57,000	23,698	124,914	84,043	91,350	3,158	100,793	484,956
- International services	75,999	10,533	97,156	42,021	152,248	1,579	39,197	418,733
- Red Cross Youth	23,750	5,266	34,698	35,018	30,450	1,316	-	130,498
	474,994	263,313	693,967	700,357	608,993	26,317	279,980	3,047,921

Support departments provide administrative and resource support to the various service and operation department. Apportionment of support costs is based on time incurred. Estimation is done by the respective Heads of Department.

Home+

Tel : (+65) 6664 0699

TransportAid

Tel : (+65) 6337 3333

Singapore Red Cross Academy @ Red Cross House

15 Penang Lane, Level 3, Singapore 238486

Tel : (+65) 6664 0500

Fax: (+65) 6337 6435

(near Singapore Shopping Centre, Dhoby Ghaut MRT, Exit B)

Singapore Red Cross Academy @ Atrium

International Involvement Hub (I2Hub)

60A Orchard Road, Level 4M, Tower 1 #04-02

Singapore 238890

(near Plaza Singapura, Dhoby Ghaut MRT, Exit F)

Red Cross Home for the Disabled

8 Lengkok Bahru #04-01

Family Link @ Lengkok Bahru

Singapore 159052

Tel : (+65) 6762 1029

Fax: (+65) 6474 1029

(10 minute walk from Redhill MRT Station)

Blood Collection Centres

BloodBank@Health Sciences Authority (HSA)

11 Outram, Road

Singapore 169078

(Opposite Outram MRT)

BloodBank@Woodlands

900 South Woodlands Drive

#05-07 Woodlands Civic Centre

Singapore 730900

BloodBank@Dhoby Ghaut

Dhoby Xchange

11 Orchard Road

#B1-05 to 10

Singapore 238826

Bloodbank@Westgate Tower

1 Gateway Drive

#10-01 to 05

Westgate Tower

Singapore 608531

Visit giveblood.sg for opening hours, or call 6220 0183 to make an appointment.

Shop@RedCross Thrift Shops

Red Cross Training Campsite

62 Jalan Khairuddin

Singapore 457524

(Opens Fridays, 10.30am - 3.30pm)

Red Cross House

15 Penang Lane

Singapore 238486

(Opens Wednesdays, 11.00am - 4pm)

SERVE HUMANITY, SAVE LIVES

[Make a donation](http://redcross.give.asia) - redcross.give.asia

[Learn first aid](mailto:academy@redcross.sg) - academy@redcross.sg

[Donate blood](http://giveblood.sg) - giveblood.sg

[Be a member or volunteer](http://redcross.sg) - redcross.sg

[Share your story](http://redcross.sg/mystory) - redcross.sg/mystory

[Shop and give back](http://redcrossmall.com) - redcrossmall.com

Singapore Red Cross Society

UEN: S86CC0370E

15 Penang Lane
Red Cross House
Singapore 238486

Tel: +65 6664 0500
Fax: +65 6337 4360

Email: enquiry@redcross.sg
Website: www.redcross.sg

